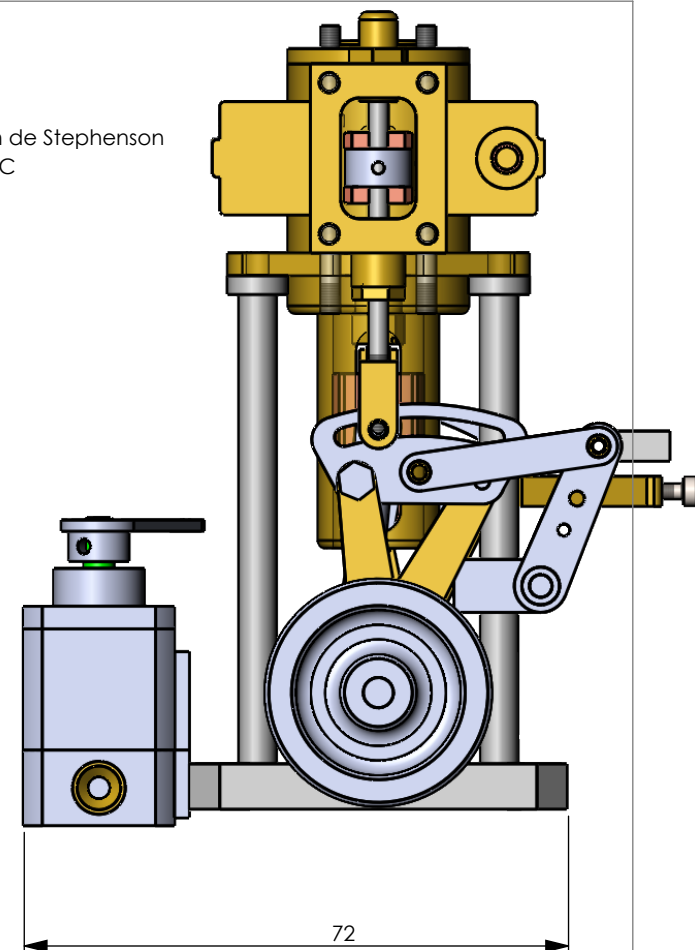


Bicylindre inversion de Stephenson
cylindrée de 6.4 CC

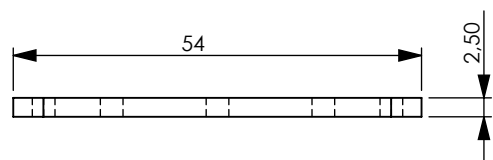
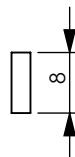
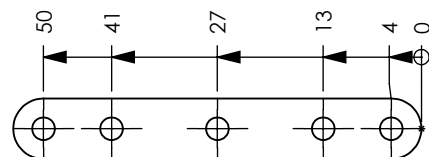
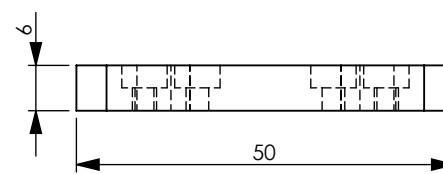
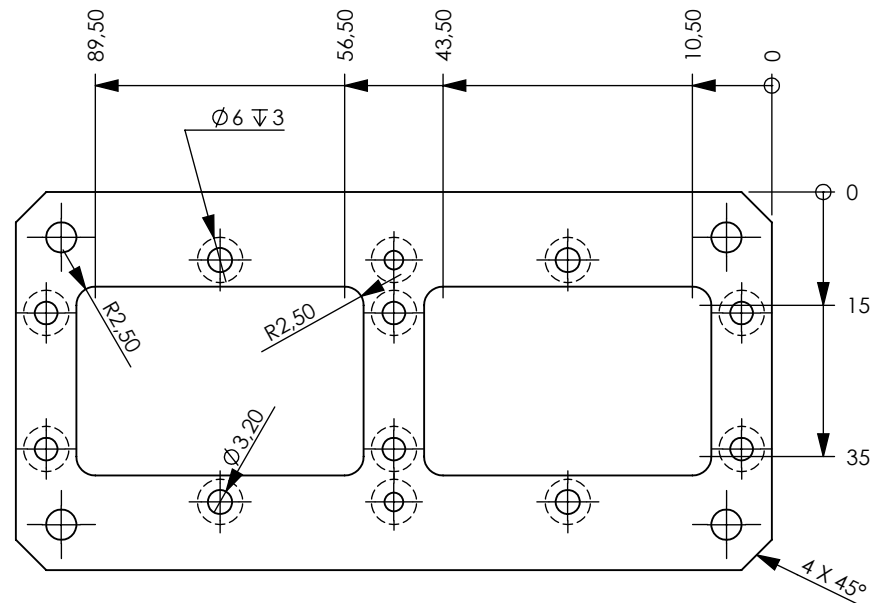
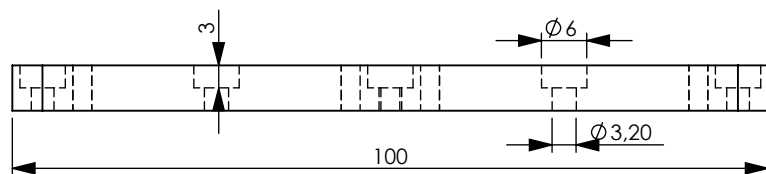
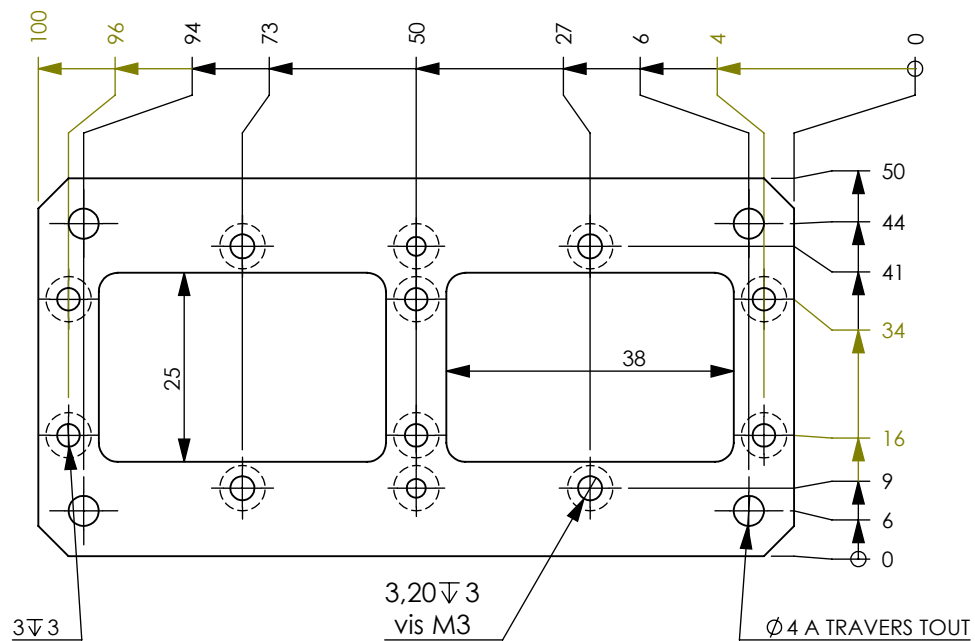


**Nota les vis M2 et M2.5 M3
ne sont pas représentées en totalité !**

chaloupe 1M

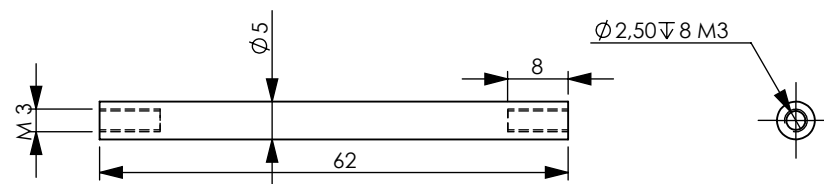
3D
6CC Van Den Bussche

SIZE A	DWG. NO. 08/03/2019	
SCALE:1:1	Francis DUFOUR	Page1



2 pièces

traverses X4

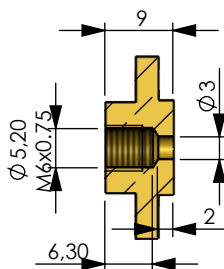
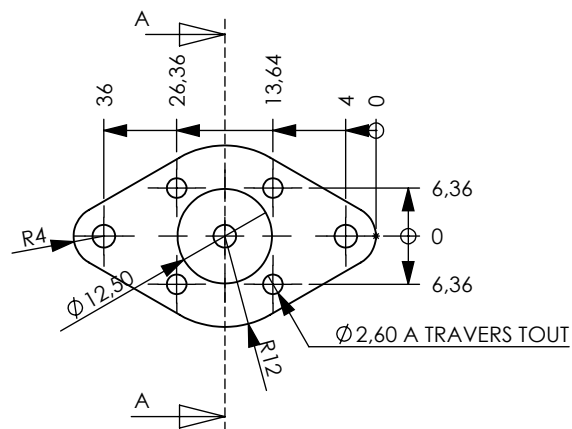


Colonnes X6 pièces

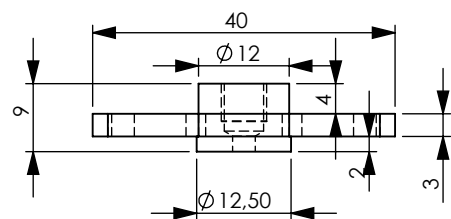
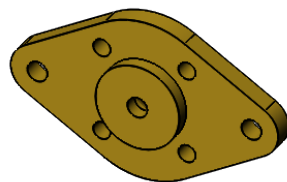
chaloupe 1M

Chassis

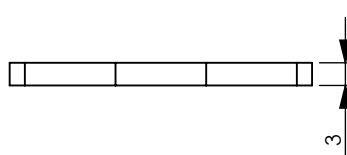
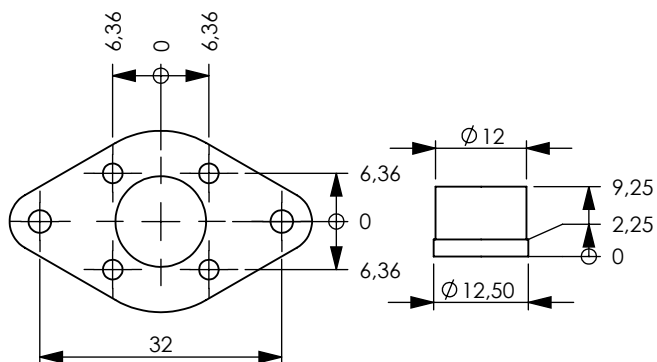
6CC Van Den Bussche



COUPE A-A

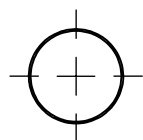


Assemblage finale

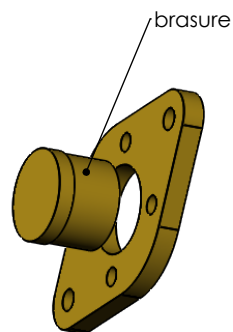


2 pièces

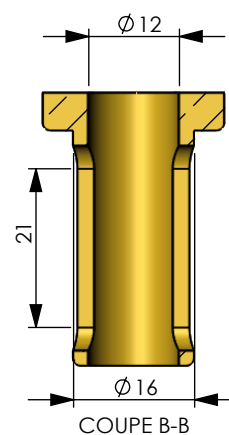
Couvercle inf X2



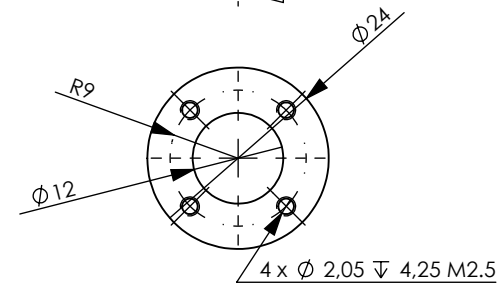
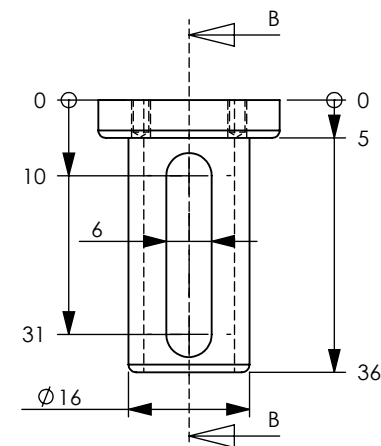
2 pièces



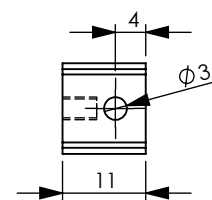
2 pièces



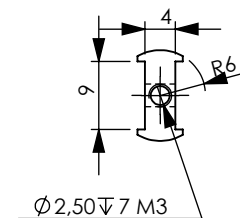
2 pièces



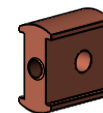
2 pièces



crosse X2

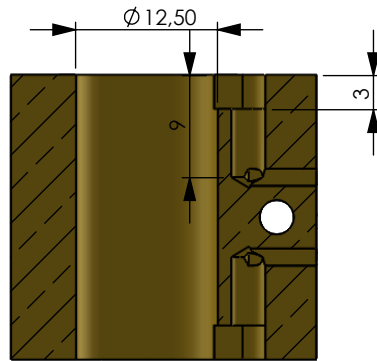


2 pièces

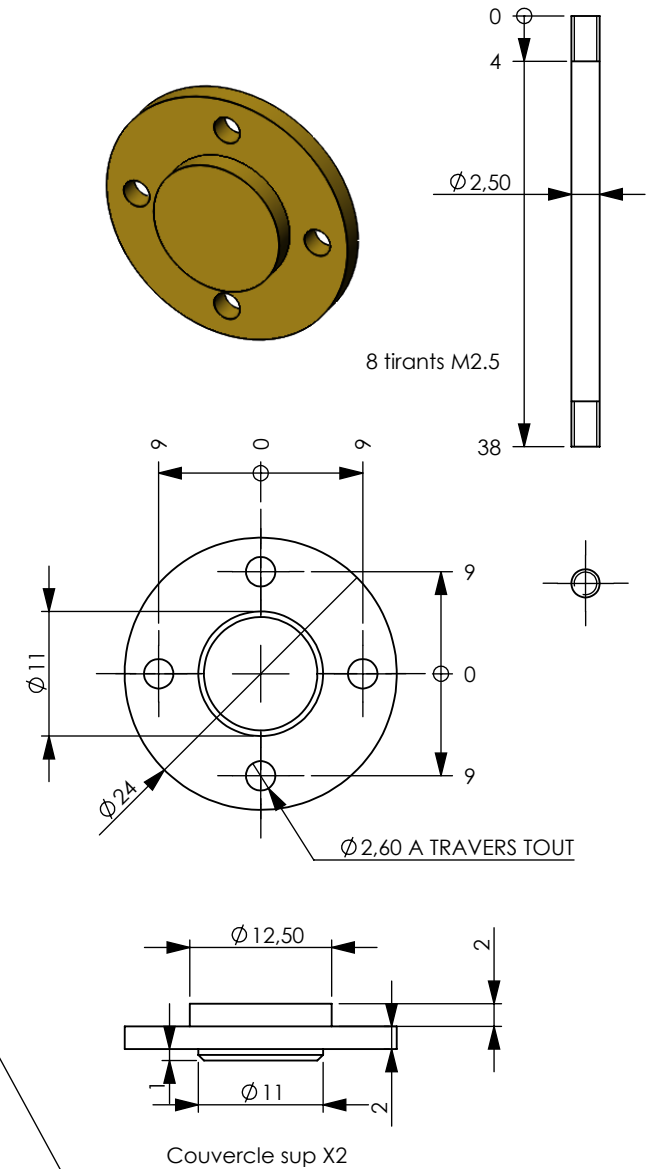
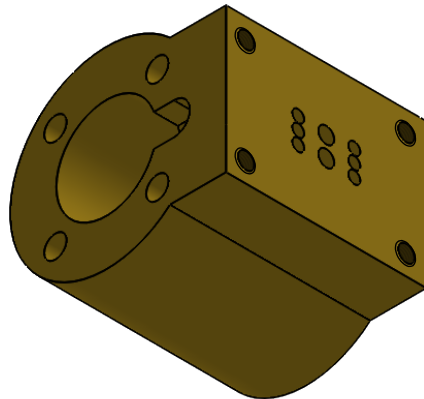


chaloupe 1M

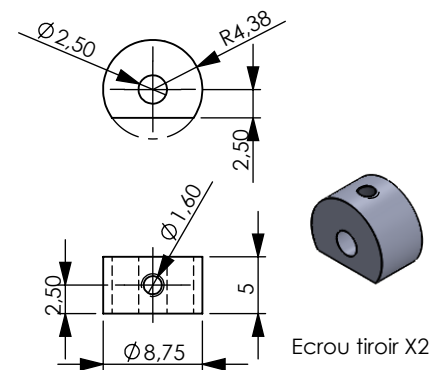
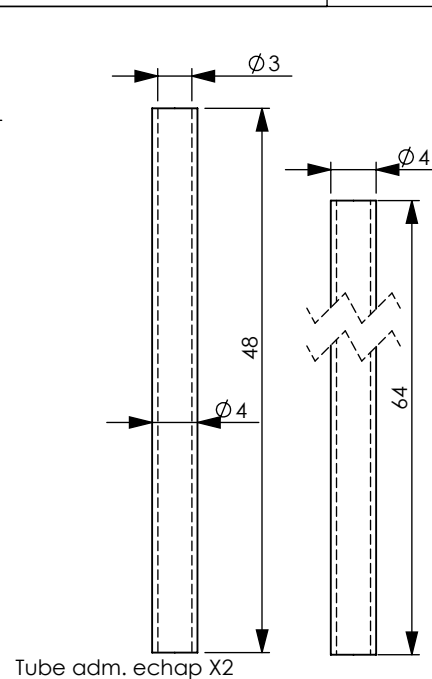
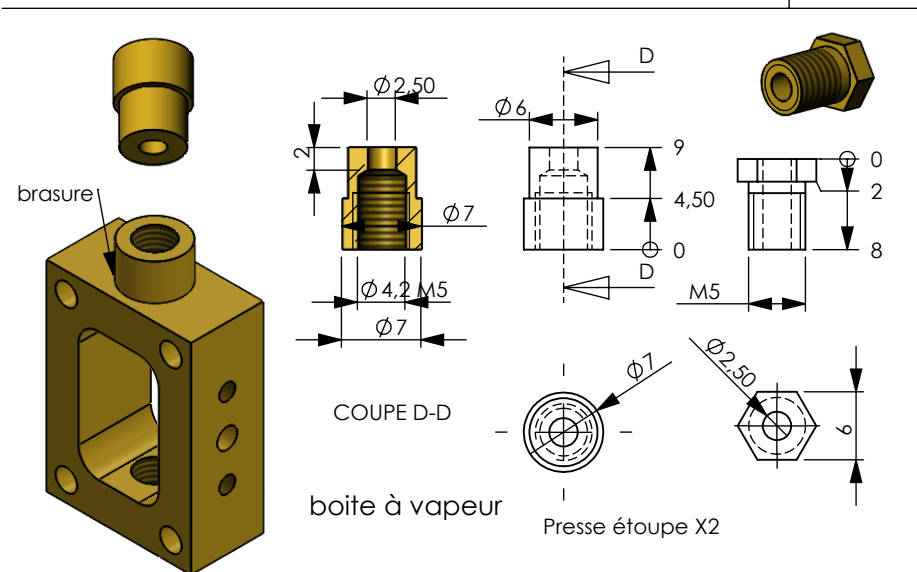
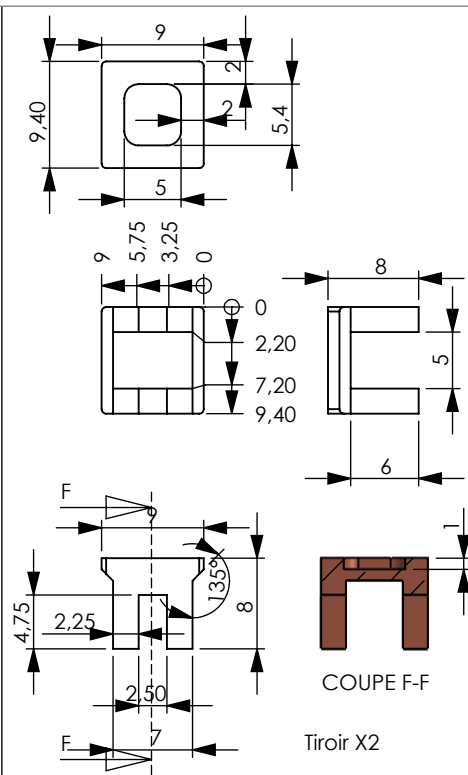
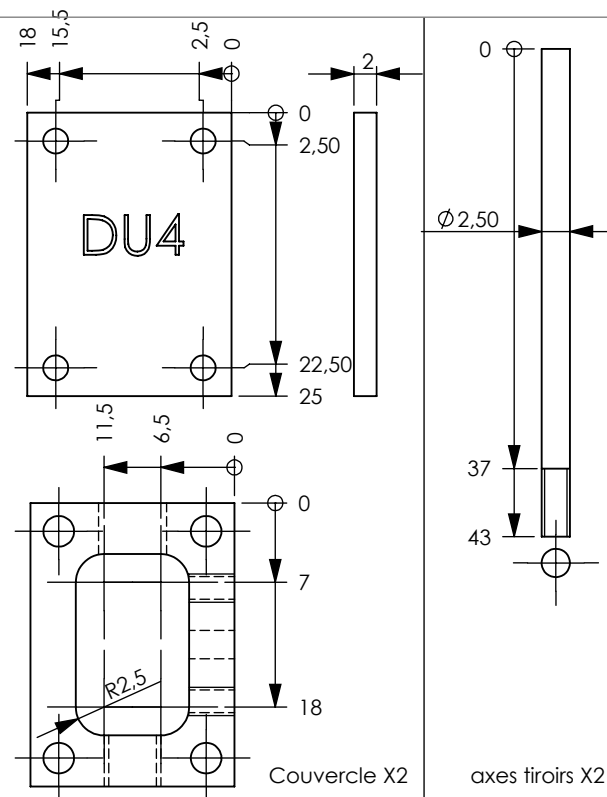
Guidage
6CC Van Den Bussche



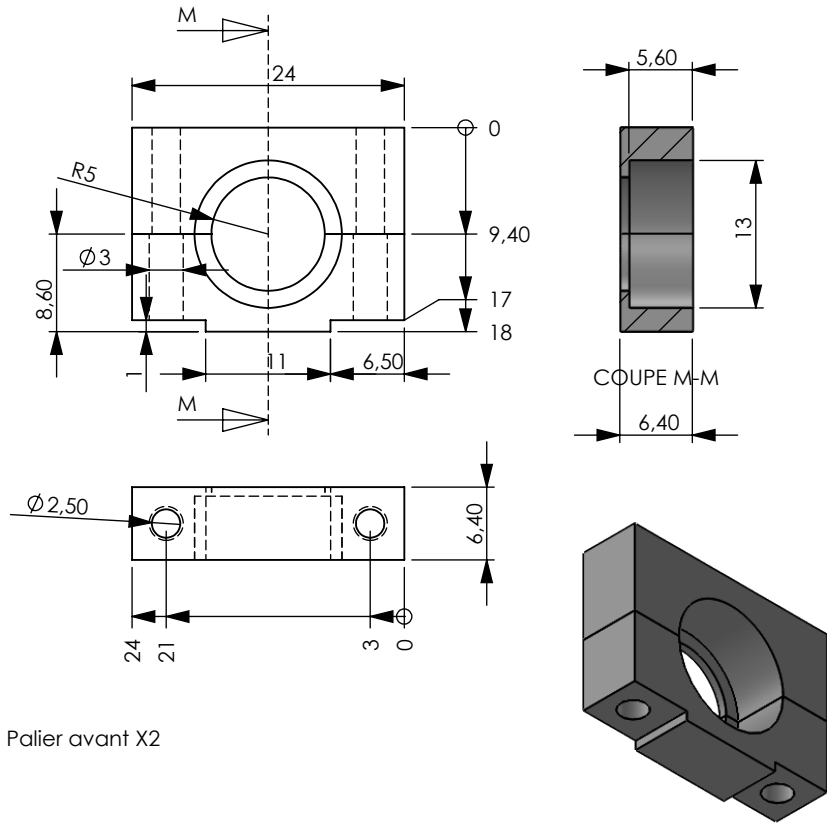
Technical drawing of a rectangular plate with dimensions and hole specifications. The plate has a width of 25 and a height of 22.50. The distance between the center of the leftmost hole and the right edge is 16. The distance between the center of the rightmost hole and the left edge is 12.50. The distance between the center of the topmost hole and the bottom edge is 9. The distance between the center of the bottommost hole and the top edge is 2.50. The plate contains 4 holes, each with a diameter of $\phi 2.05$ and a depth of 6. The holes are arranged in a 2x2 grid. The distance between the center of the top-left hole and the center of the bottom-left hole is 6.50. The distance between the center of the top-right hole and the center of the bottom-right hole is 6.50. The distance between the center of the top-left hole and the center of the top-right hole is 1.55. The distance between the center of the bottom-left hole and the center of the bottom-right hole is 1.55. The distance between the center of the top-left hole and the center of the bottom-right hole is 0. The distance between the center of the top-right hole and the center of the bottom-left hole is 0. The plate is labeled with dimensions and hole specifications: 25, 22.50, 16, 12.50, 9, 2.50, 0, 4 x $\phi 2.05 \nabla 6$, 6.50, 1.55, 0, 1.55, 6.50, 2 x $\phi 2 \nabla 6$.



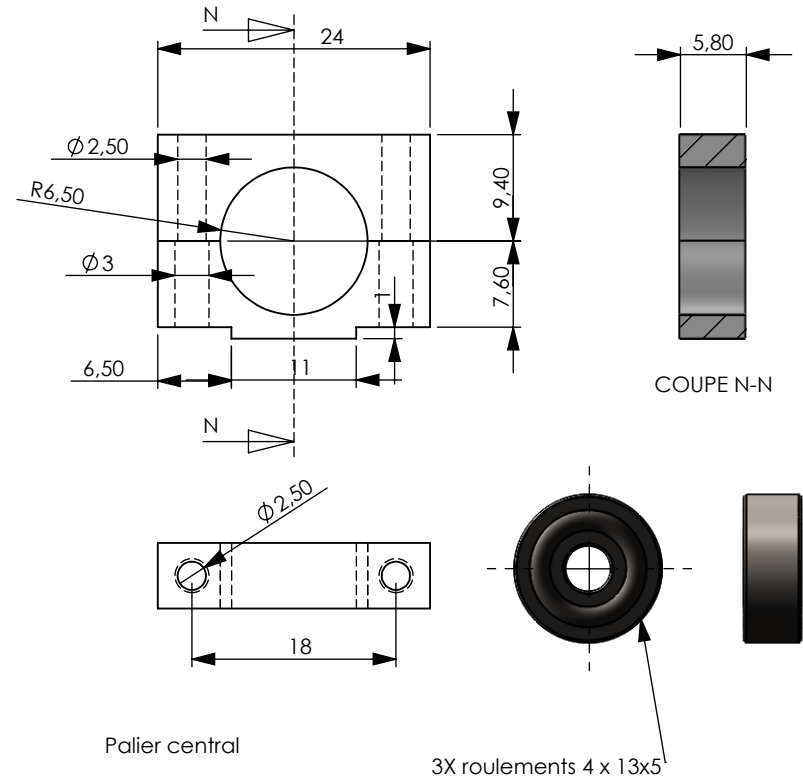
SIZE A	DWG. NO. 08/03/2019		
SCALE:1.5:1	Francis DUFOUR	Page4	



BV
6CC Van Den Bussche

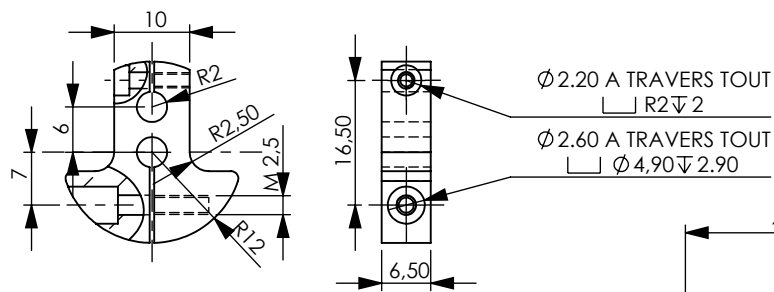


Palier avant X2

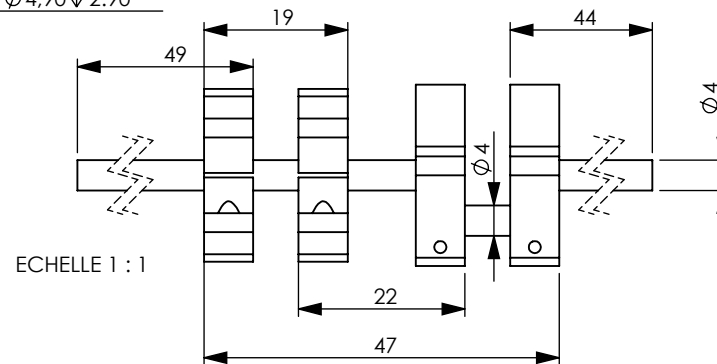
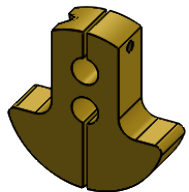


Palier central

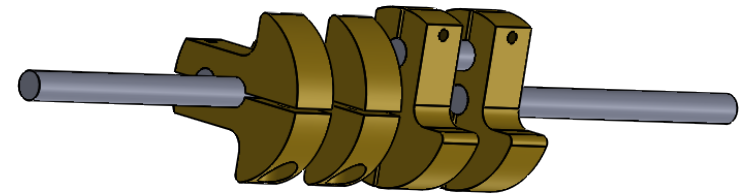
3X roulements 4 x 13x5



ECHELLE 1 : 1



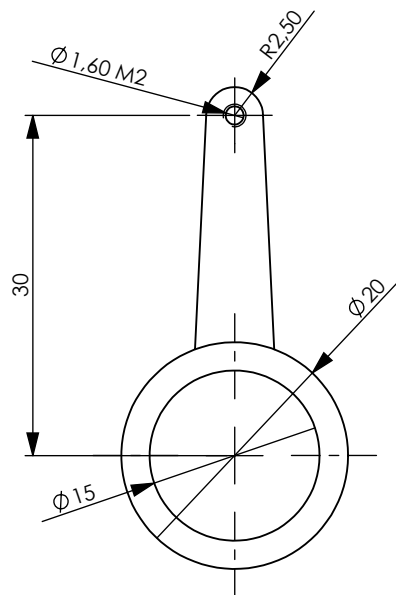
ECHELLE 1 : 1



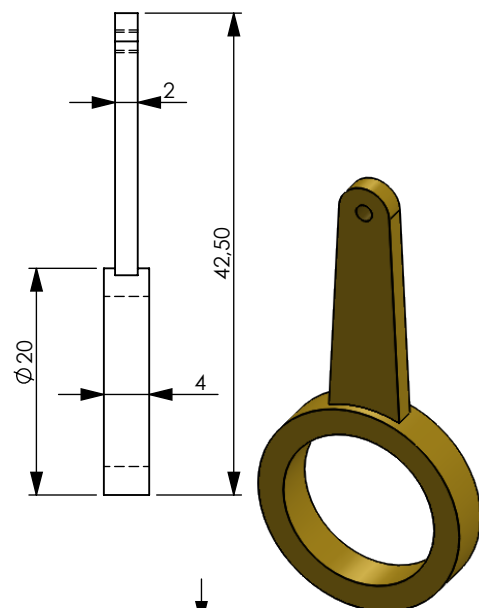
ECHELLE 1 : 1

chaloupe 1M

Vilebrequin
6CC Van Den Bussche

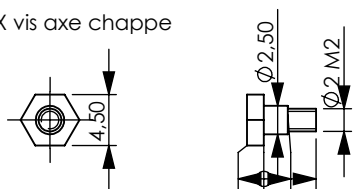


Bielle distribution X4

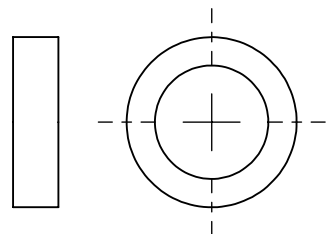
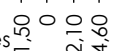


Axe X4

2X vis axe chappe

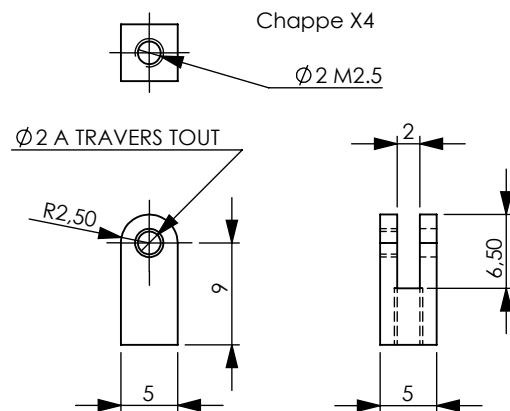


4X vis pivots des coulisses



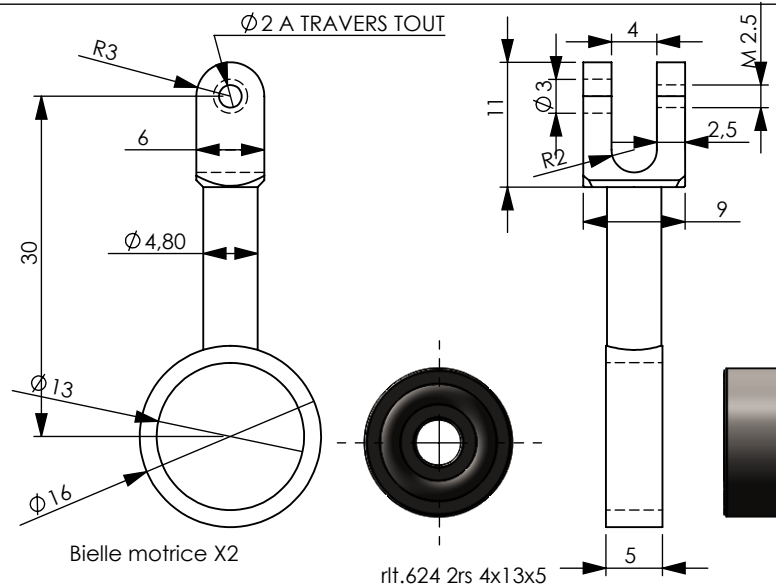
4 X roulements 10x15x4
6700ZZ

Rits excentriques



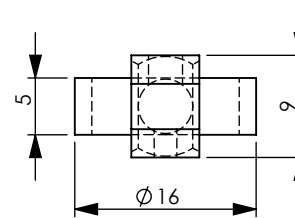
Chappe X4

Ø2 M2.5



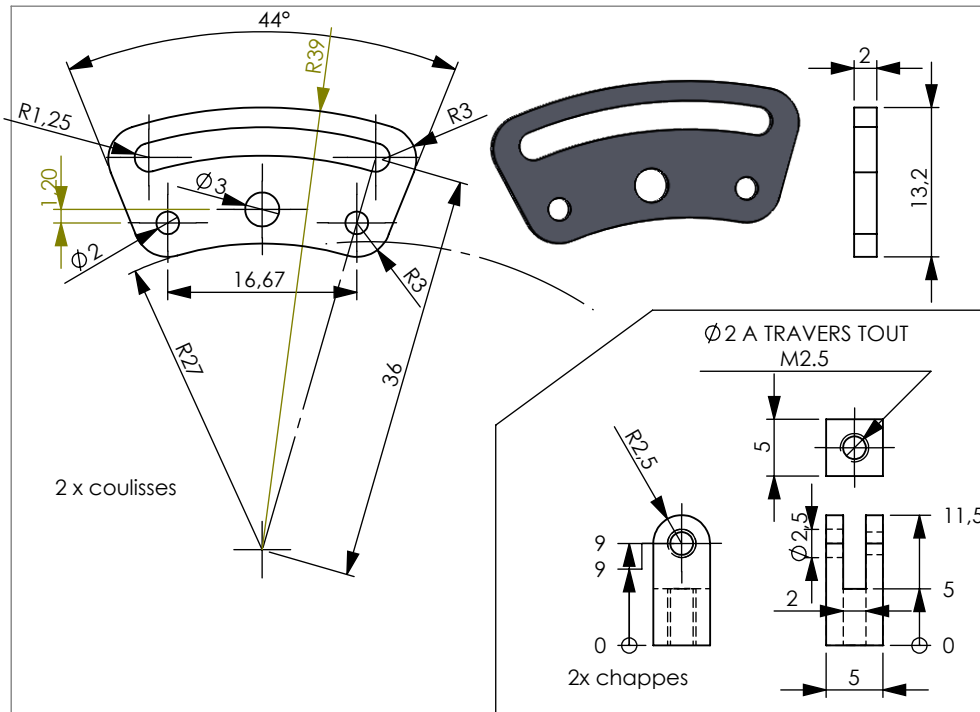
Bielle motrice X2

rlt.624 2rs 4x13x5

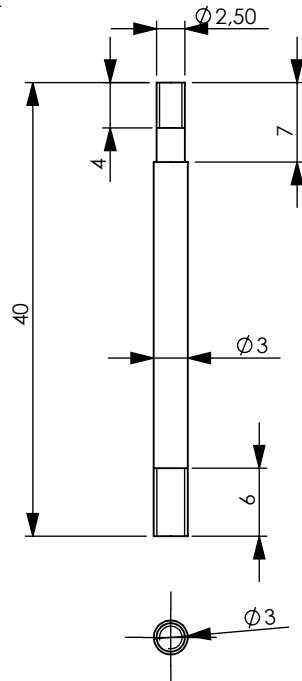


chaloupe 1M

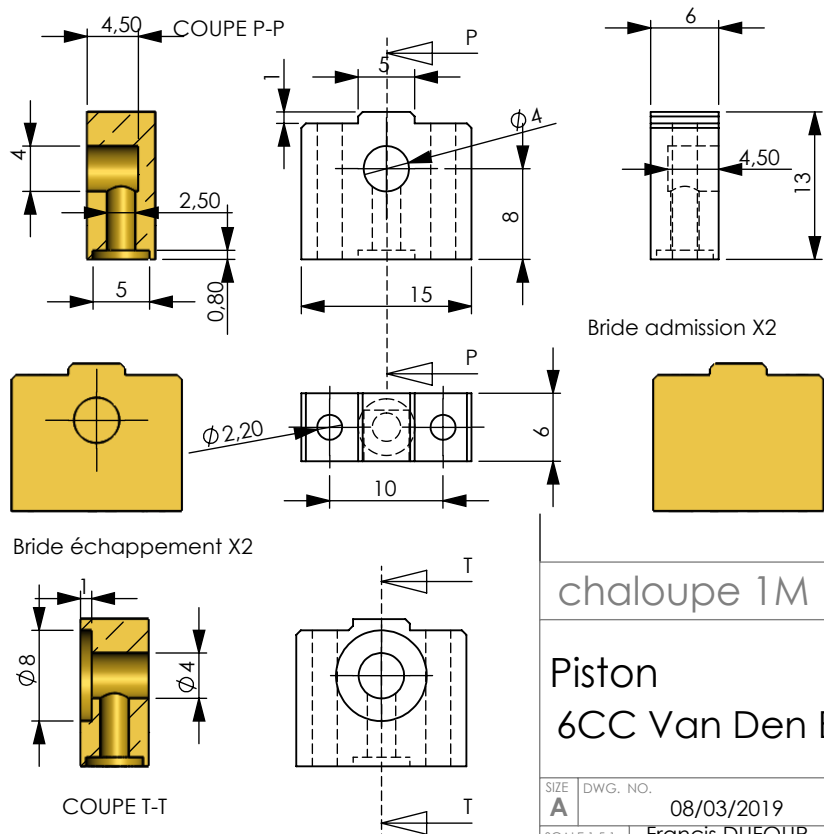
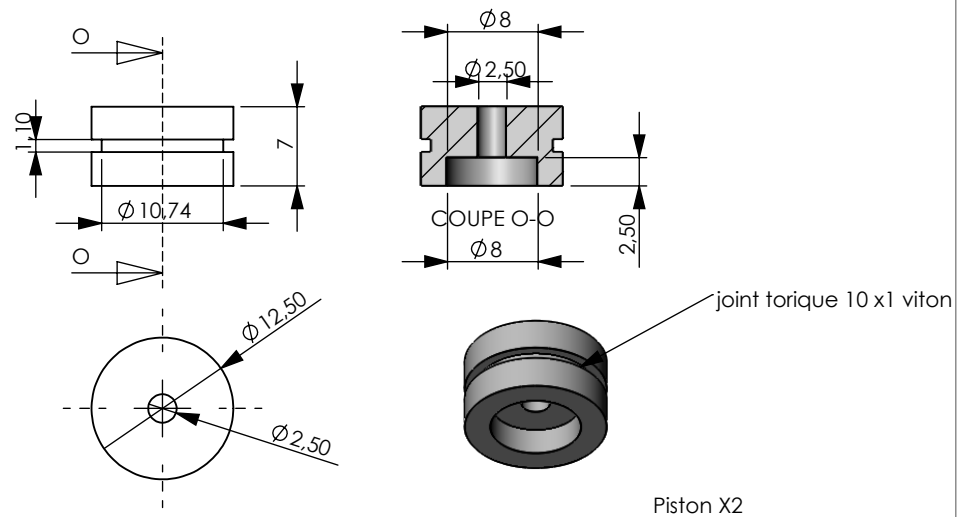
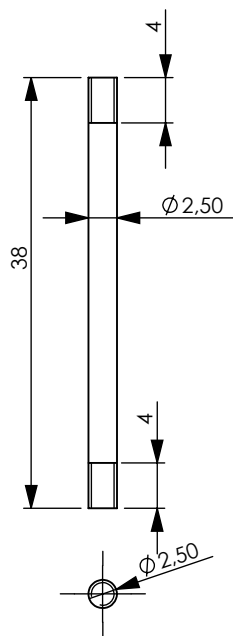
Bielle distribution
6CC Van Den Bussche



Axe de piston X2

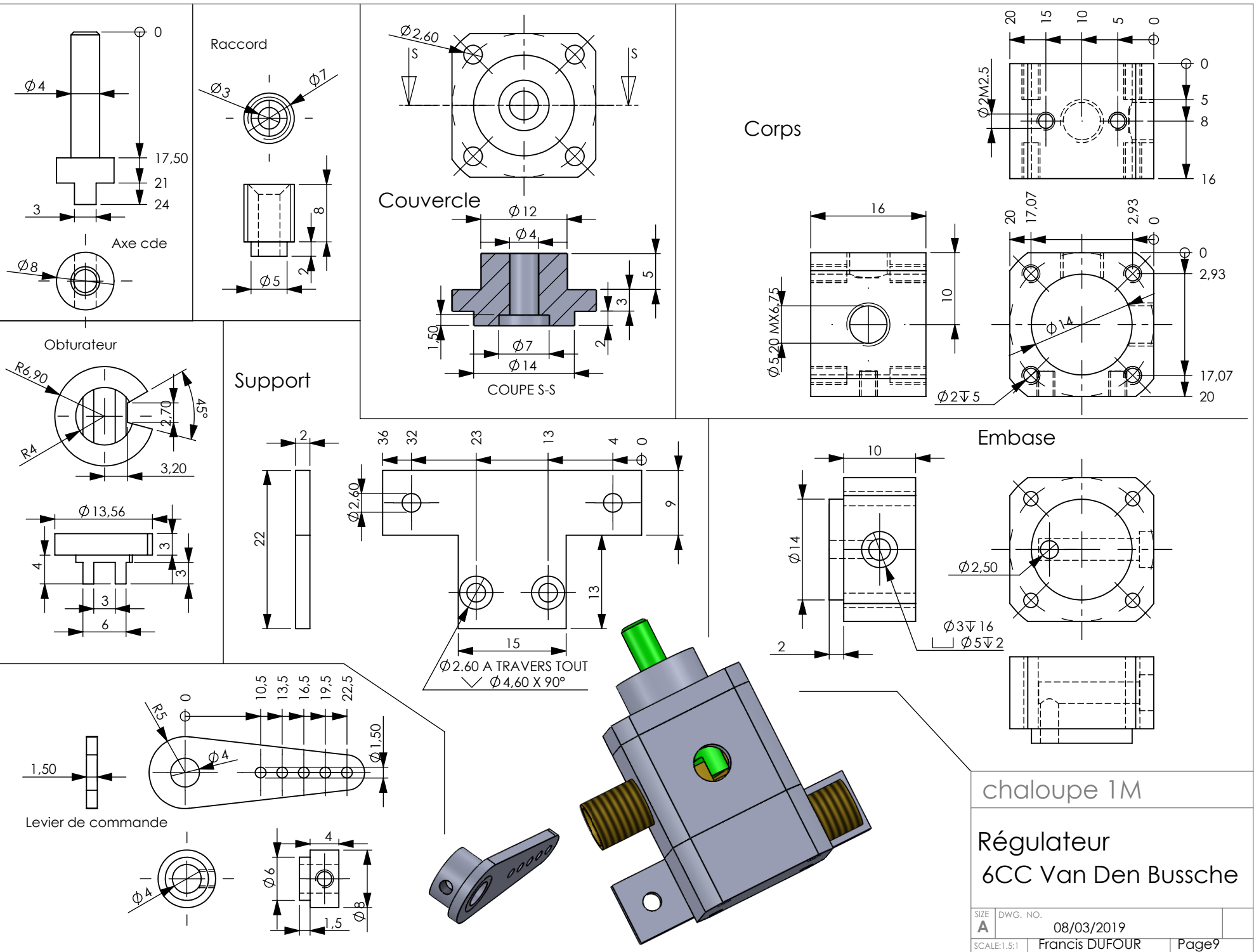


Tirant cylindre X8



chaloupe 1M

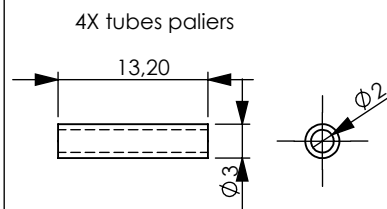
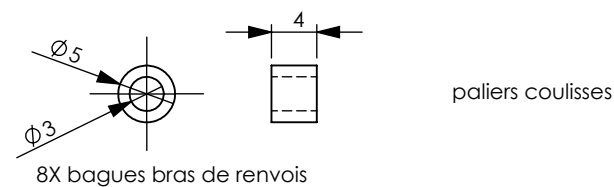
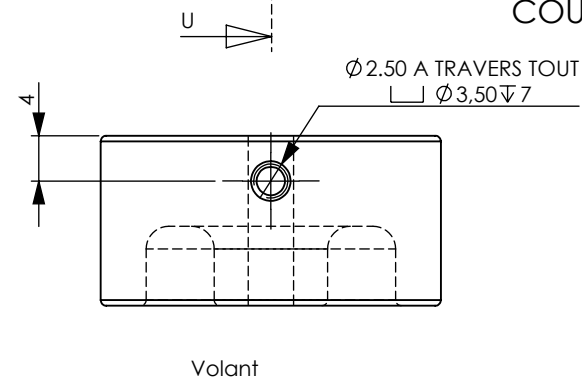
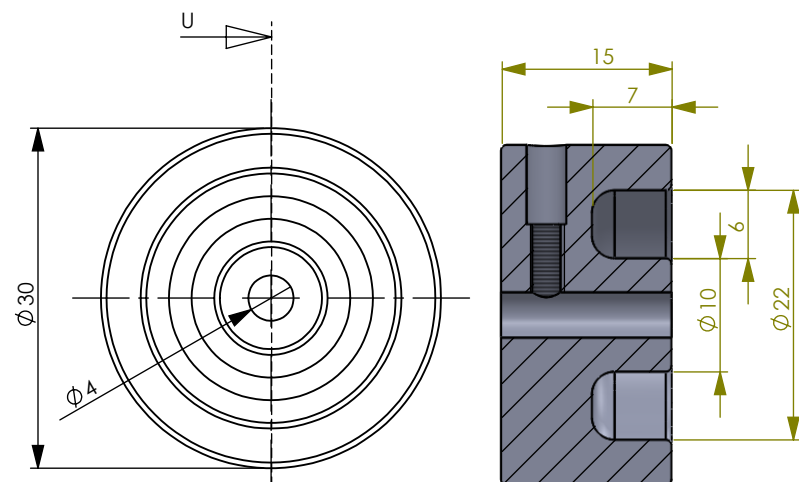
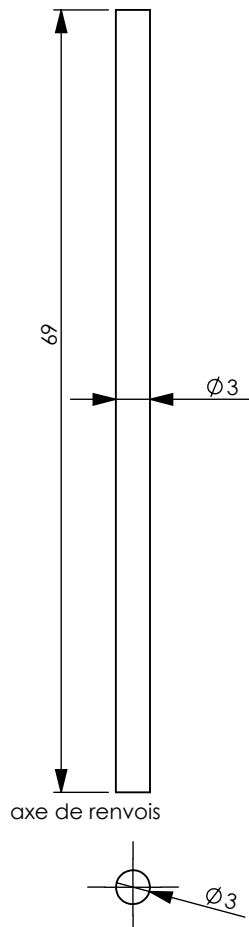
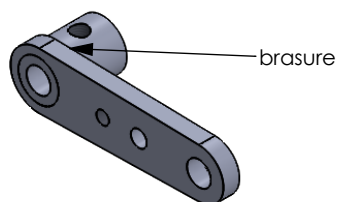
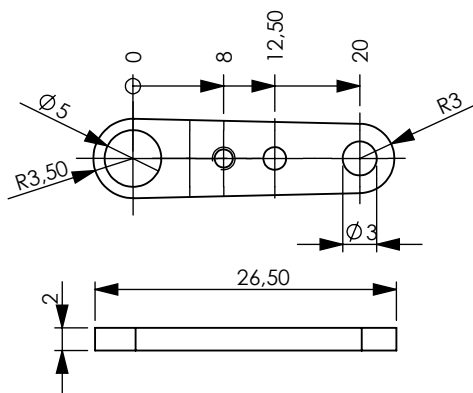
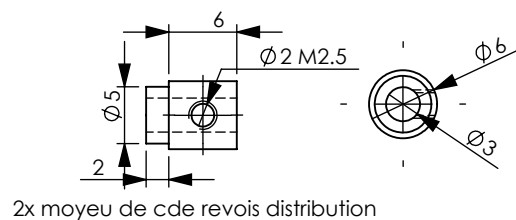
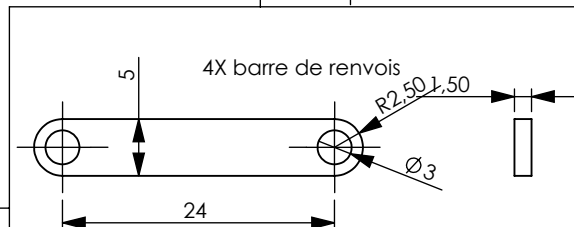
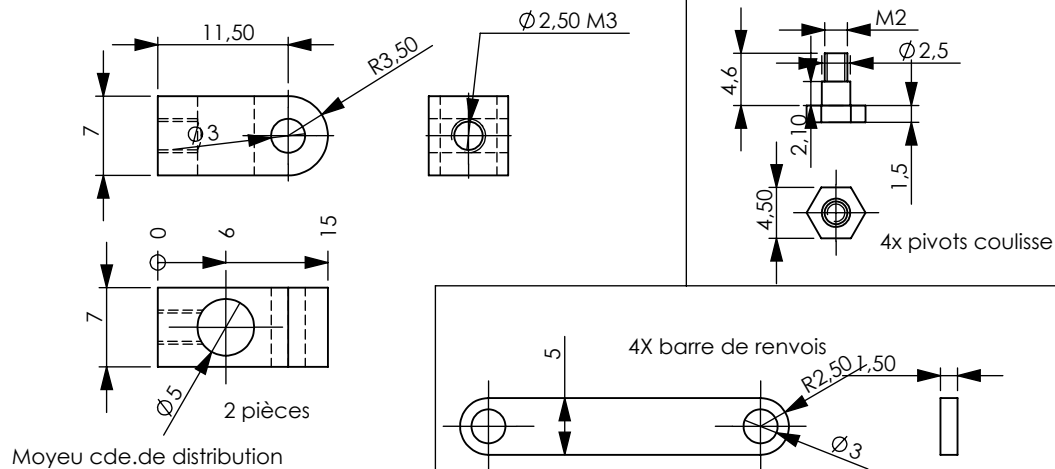
Piston
6CC Van Den Bussche



chaloupe 1M

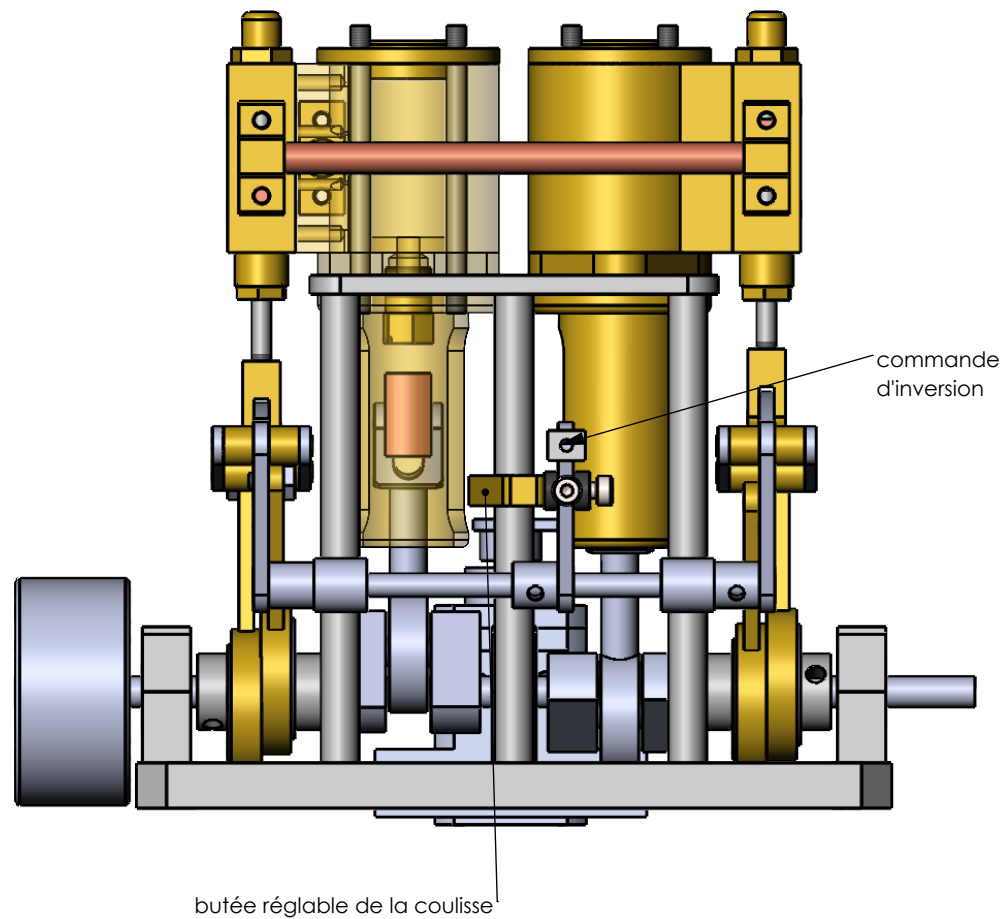
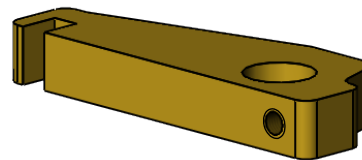
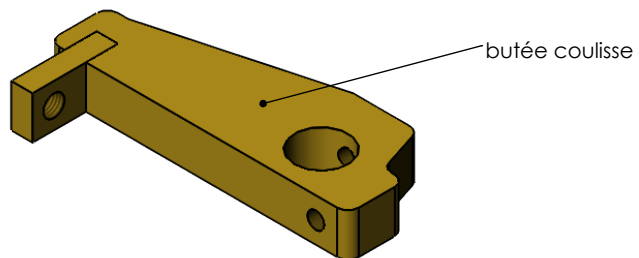
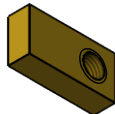
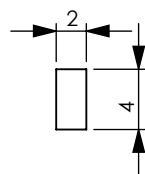
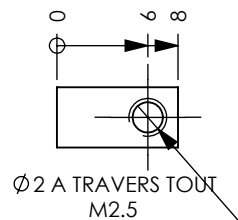
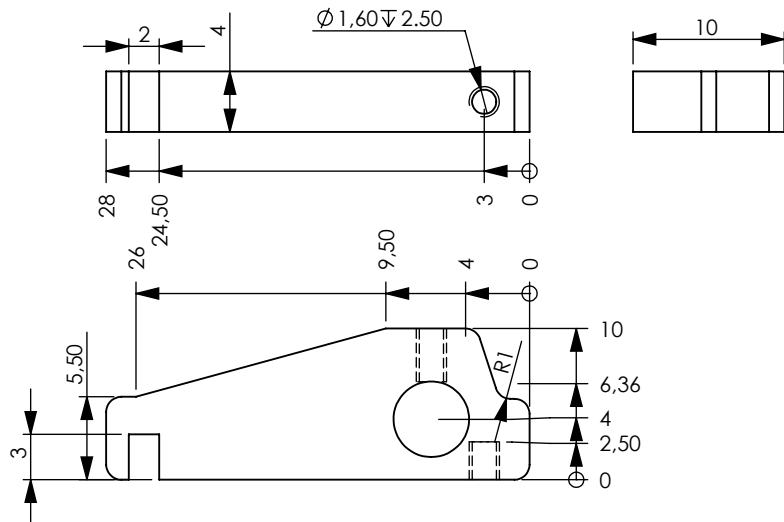
Régulateur
6CC Van Den Bussche

SIZE A	DWG. NO. 08/03/2019	
SCALE:1:51	Francis DUFOUR	Page9



paliers coulisses

chaloupe 1M	
Cde distribution 6CC Van Den Bussche	
SIZE A	DWG. NO. 08/03/2019
SCALE:1:5:1	Francis DUFOUR
Page10	



Nota les vis M2 et M2.5 ne sont pas représentées en totalité !

chaloupe 1M

butée
6CC Van Den Bussche

SIZE	DWG. NO.	
A	08/03/2019	
SCALE:2:1	Francis DUFOUR	Page11