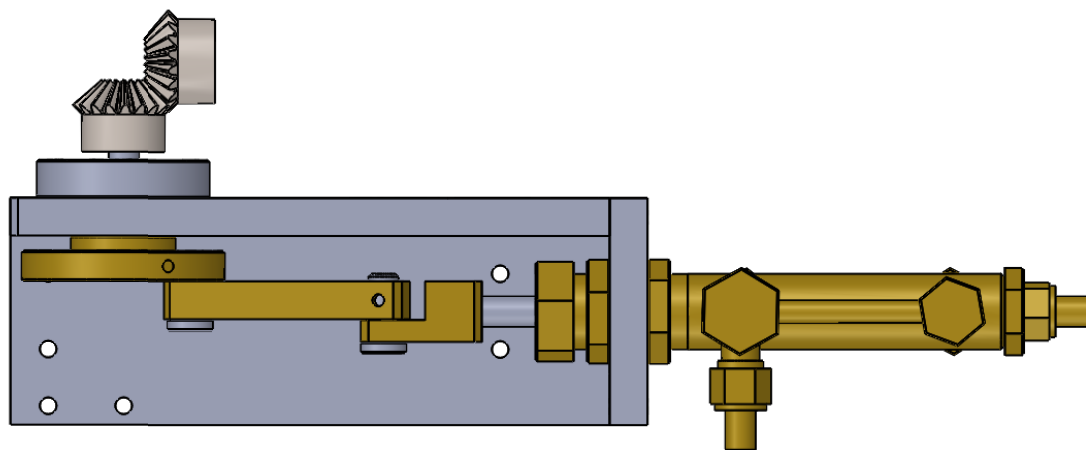
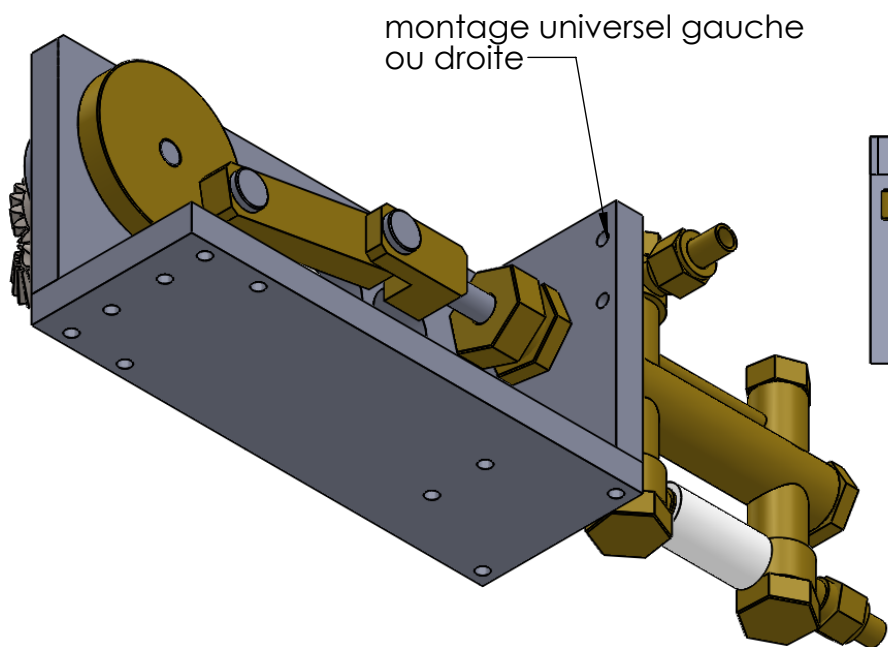
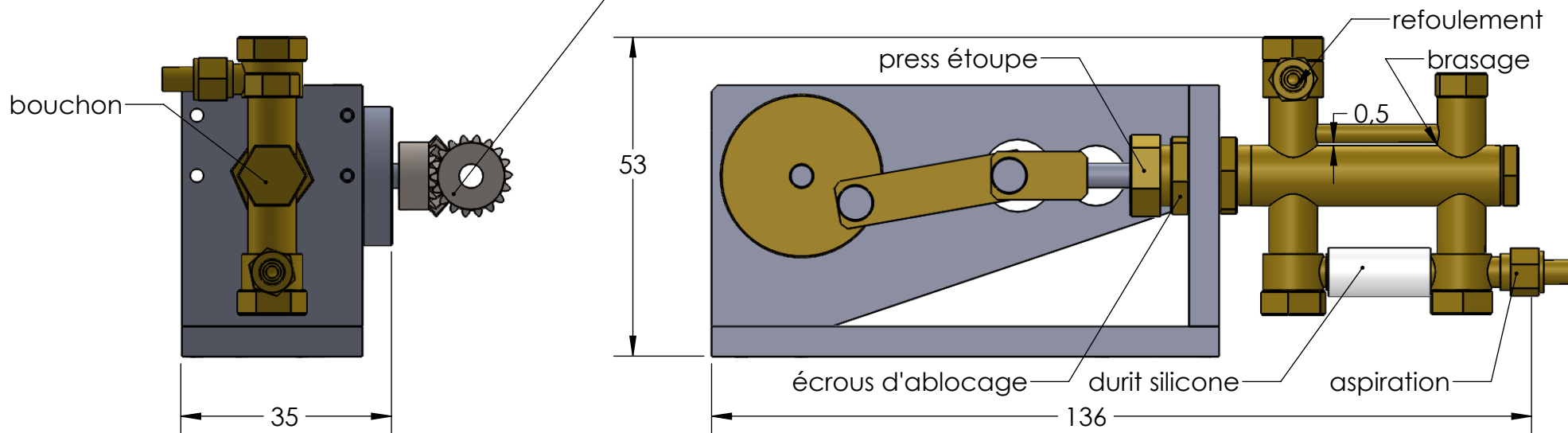


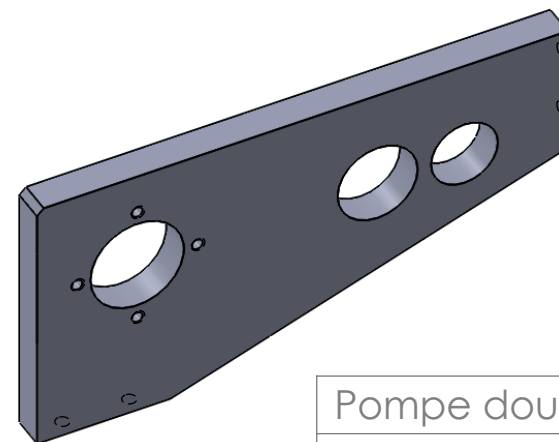
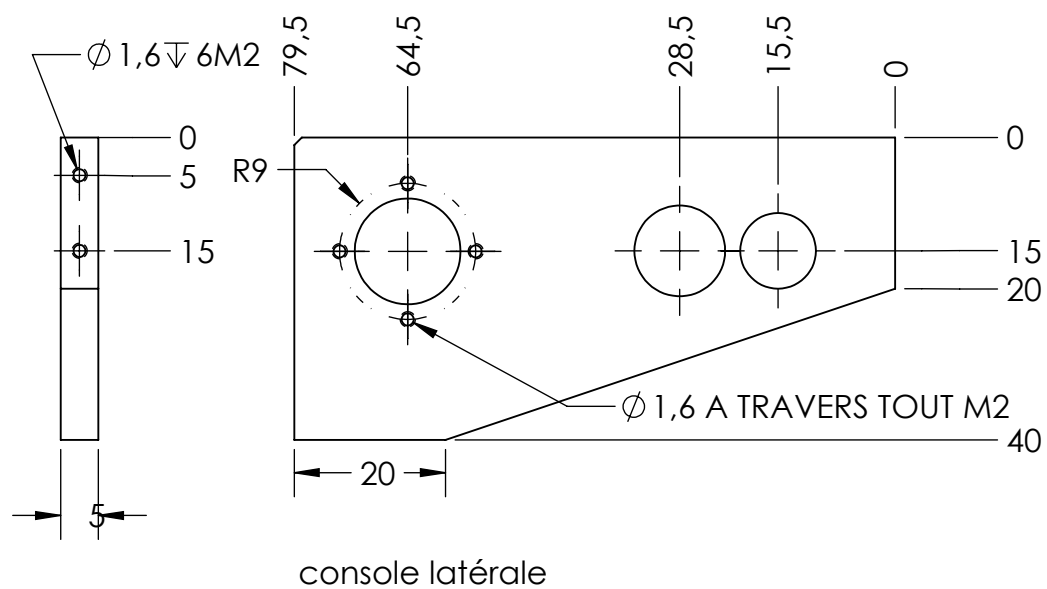
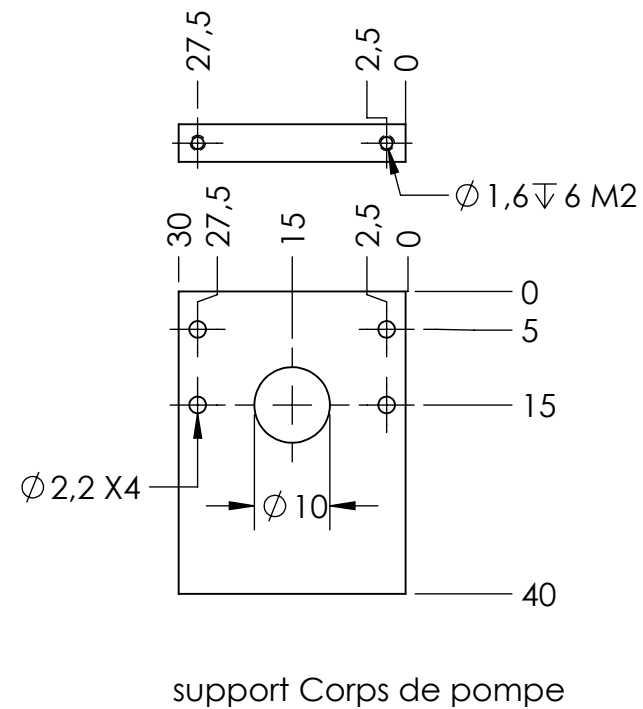
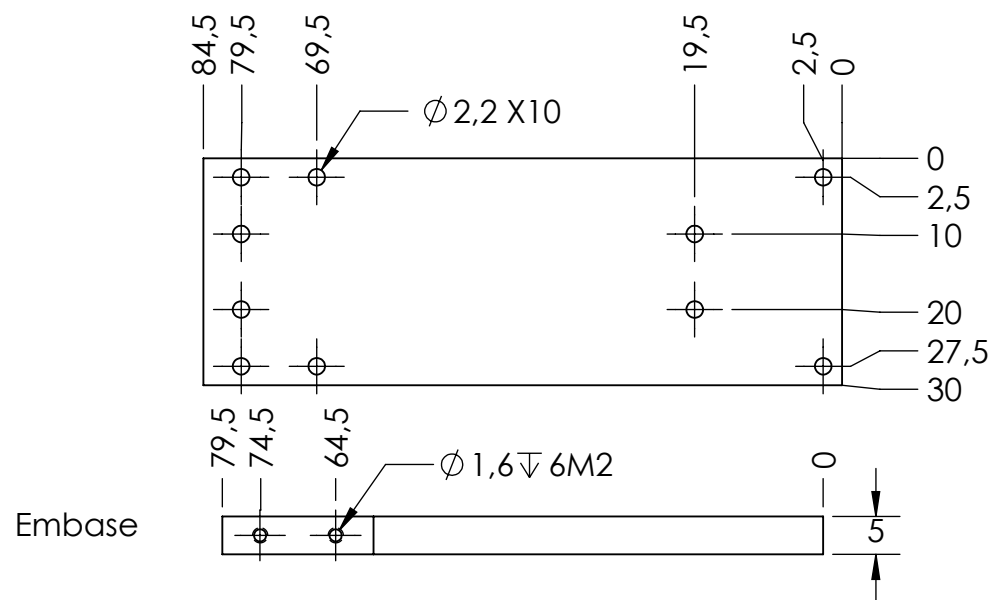
possibilité de monter un couple conique W47/1
de chez l'Octant module 0.7 réduction 1/1

le choix de monter un moteur réducté
exemple Moteur Micro HPCB avec Réduction - 6 Volts - métal

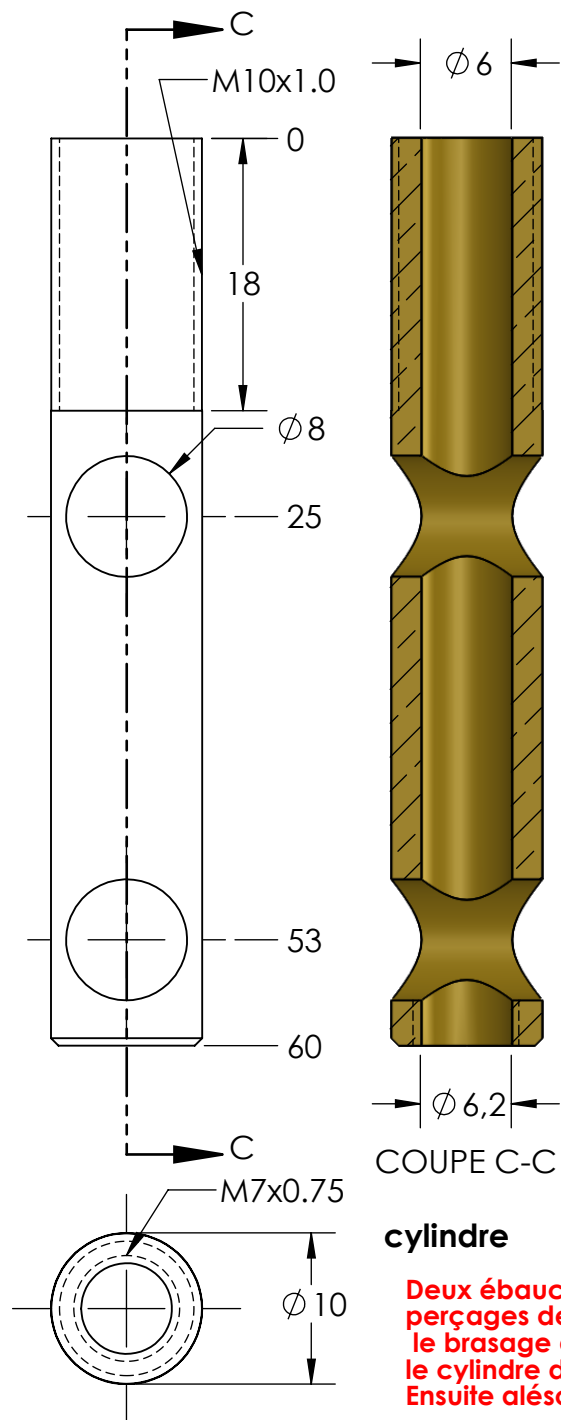


Pompe double effet

3D

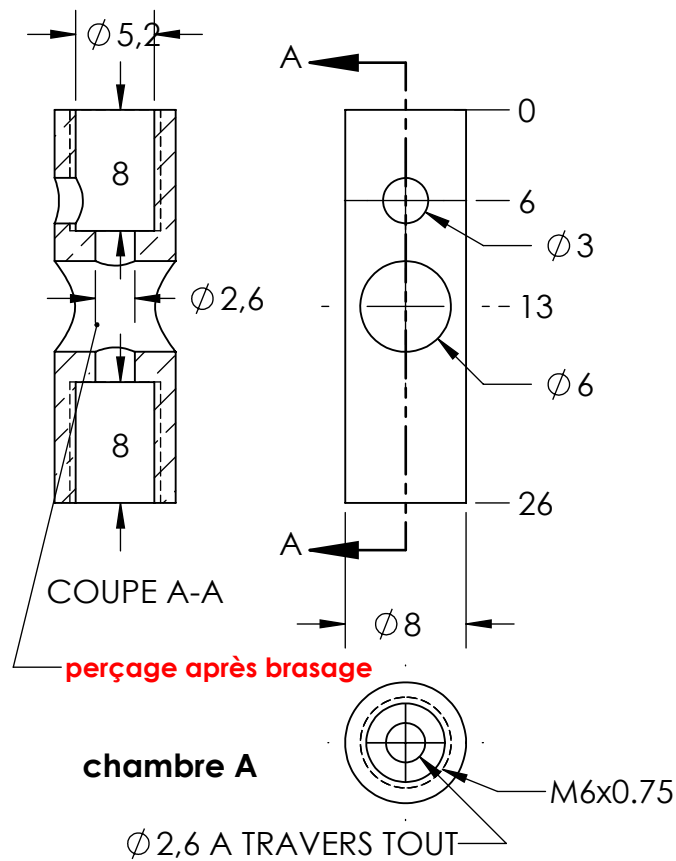


Support



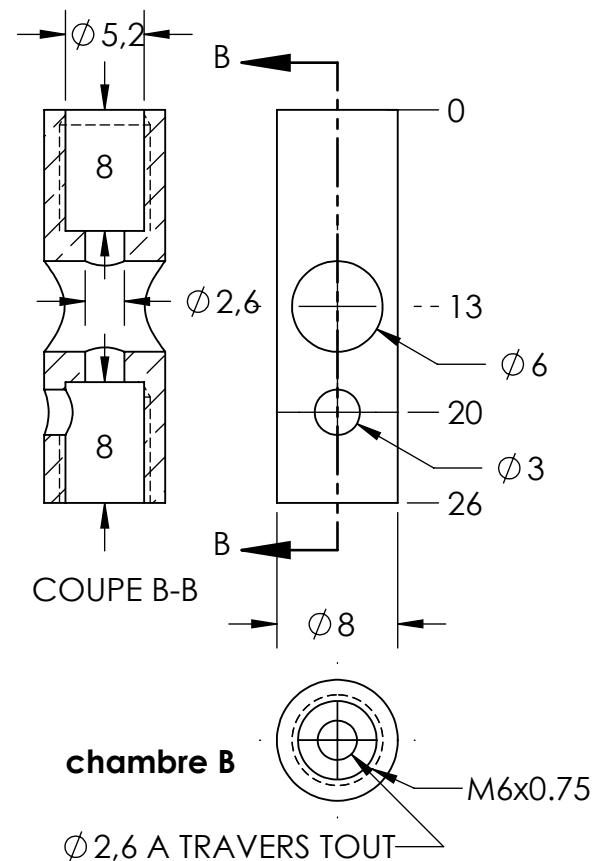
cylindre

Deux ébauches chambres à clapets réalisation des perçages des $\phi 5,8\text{mm}$ du cylindre à effectuer après le brasage des chambres à clapets sur le cylindre de pompe
Ensuite alésoir de $\phi 6\text{mm}$



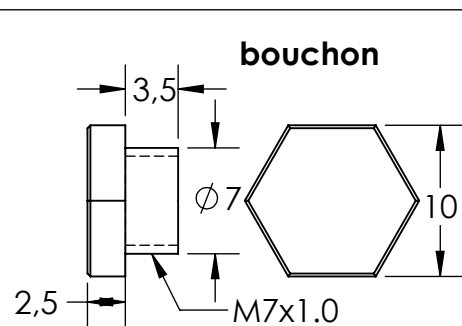
chambre A

$\phi 2,6$ A TRAVERS TOUT

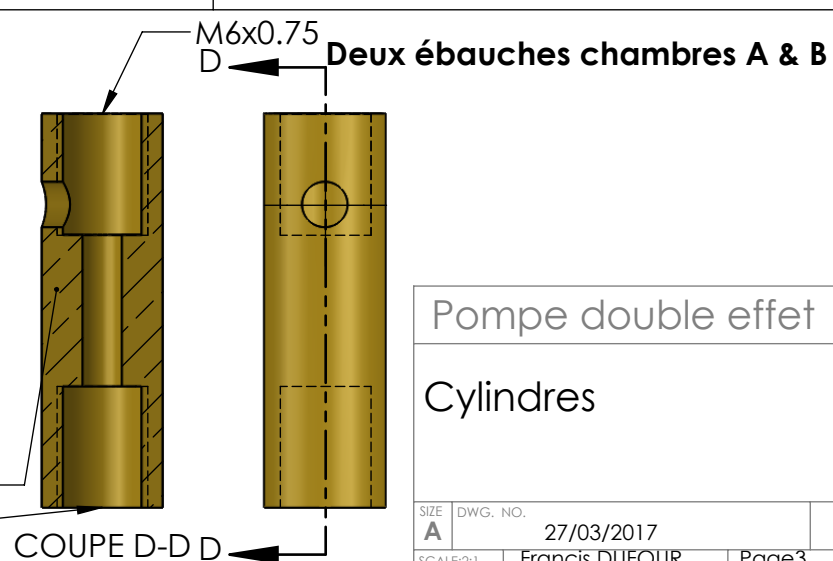


chambre B

$\phi 2,6$ A TRAVERS TOUT



bouchon

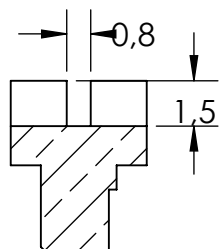
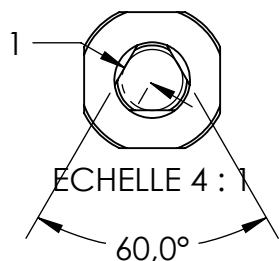


Deux ébauches chambres A & B

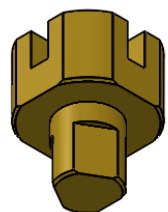
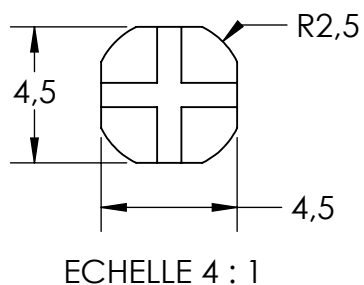
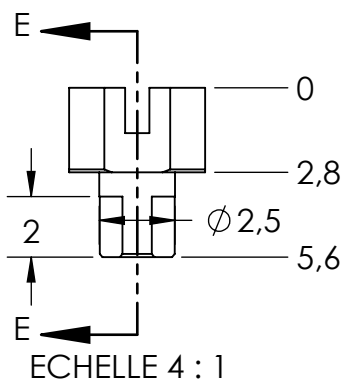
Pompe double effet

Cylindres

4 X clapets

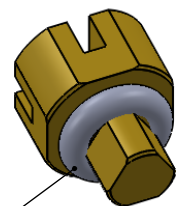


COUPE E-E
ECHELLE 4 : 1

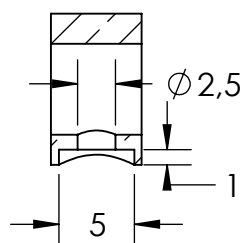
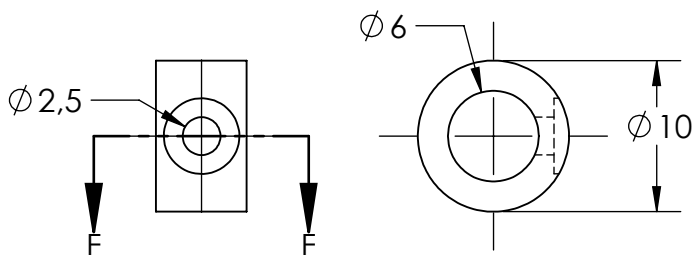


ECHELLE 4 : 1

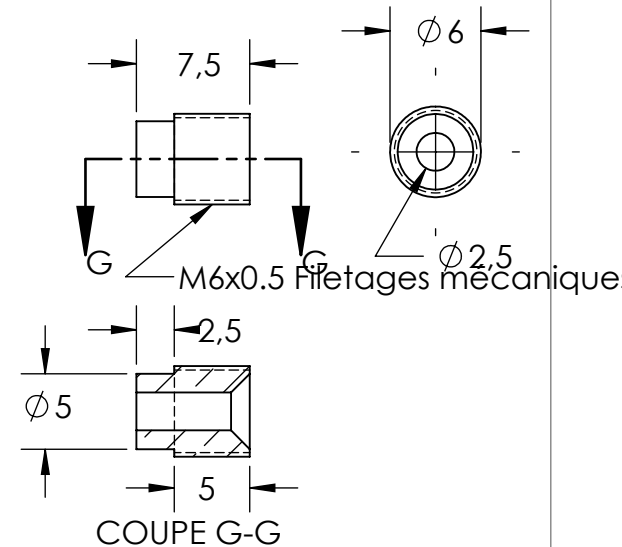
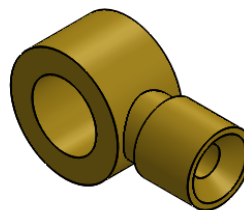
Tor viton Ø 2.5x1



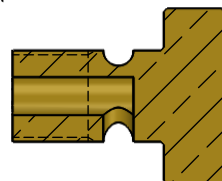
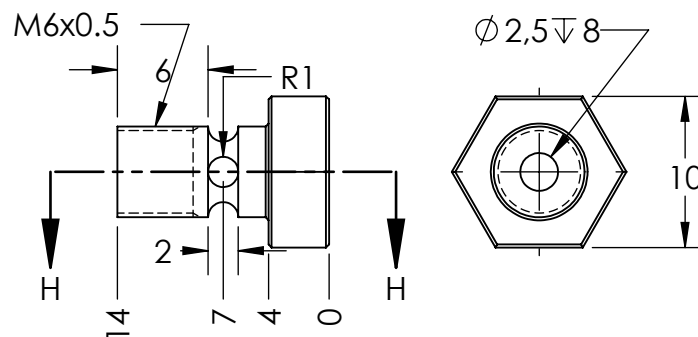
ECHELLE 4 : 1



COUPE F-F

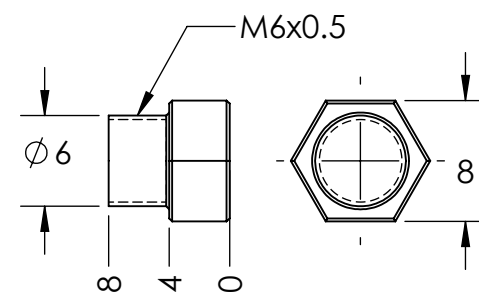
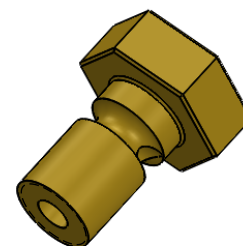


banjo X2



COUPE H-H

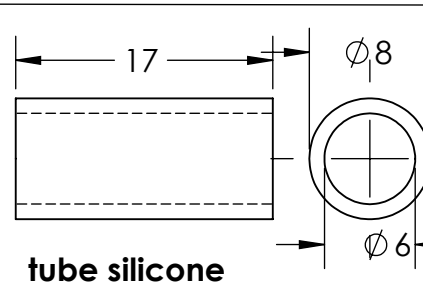
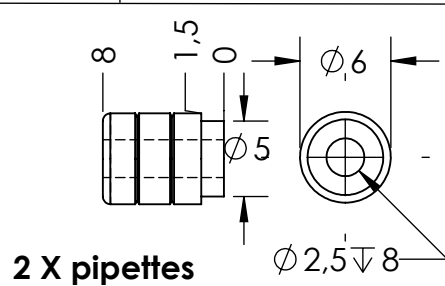
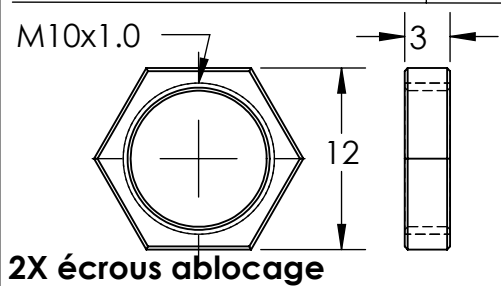
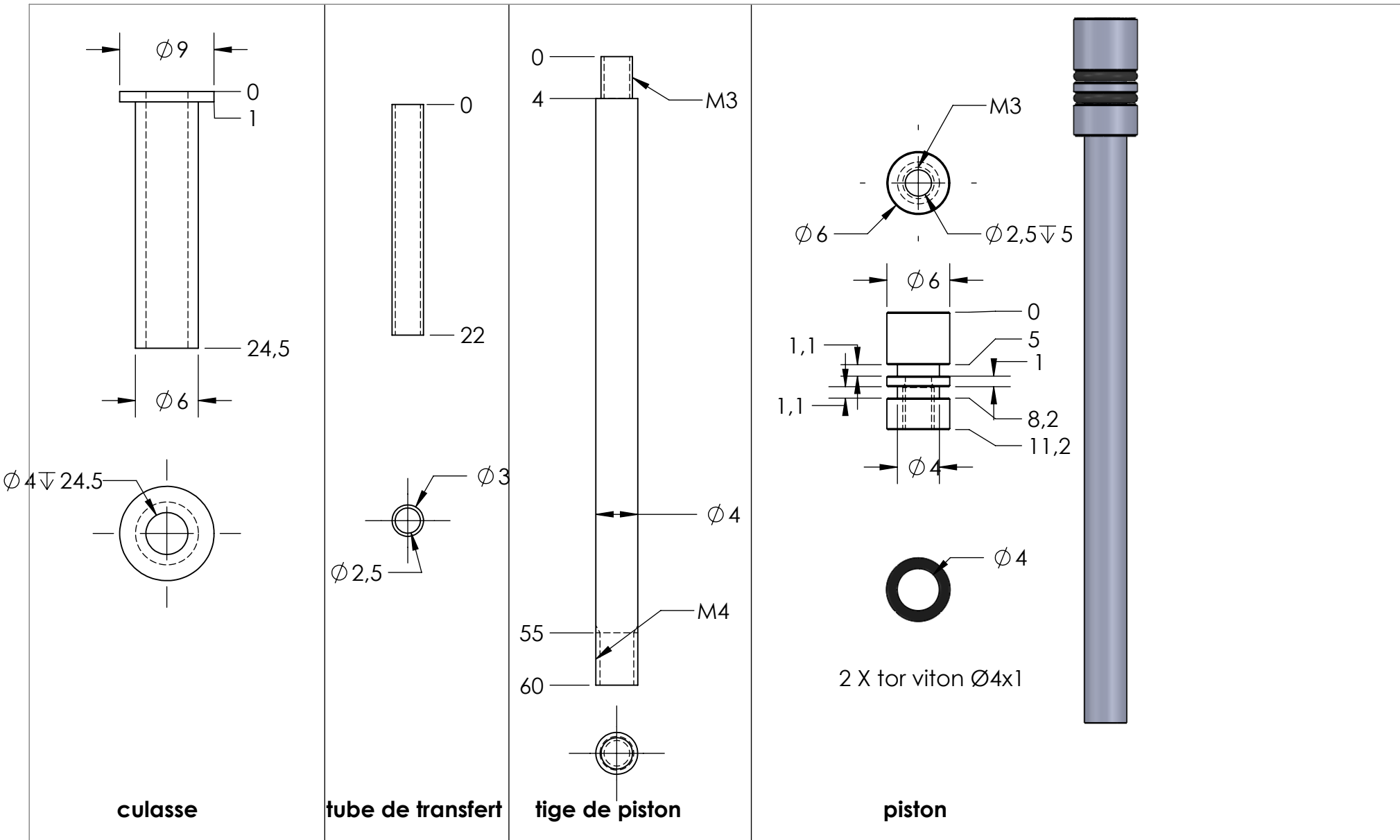
Vis banjo X2

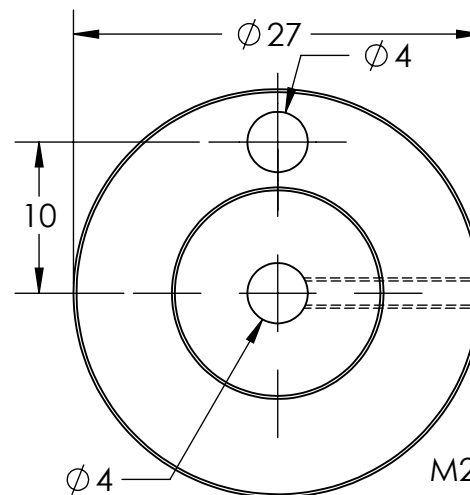
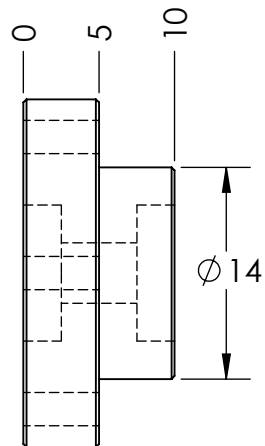
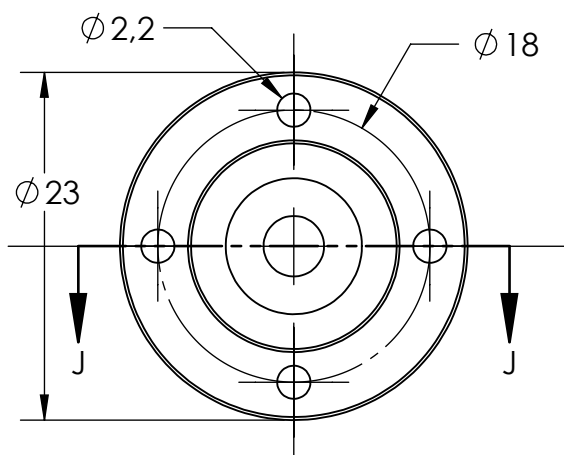


Bouchon transfert

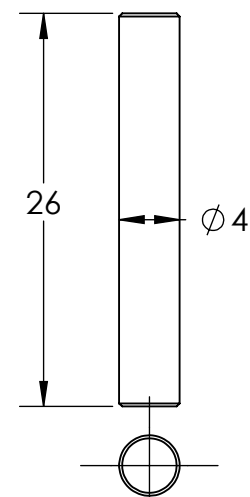
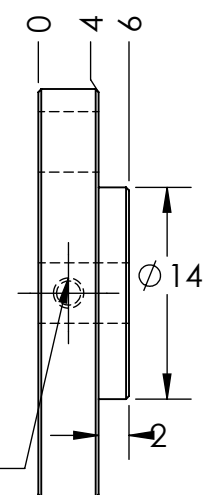
Pompe double effet

Clapets

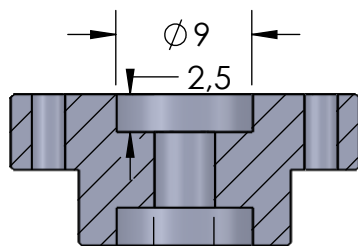




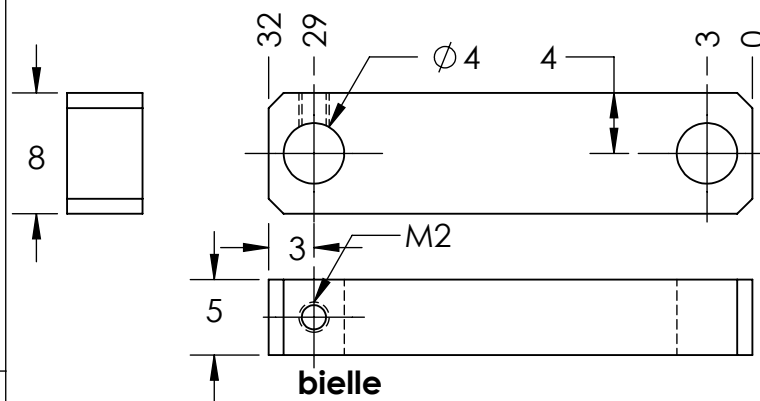
volant



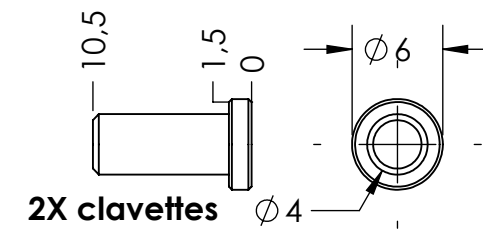
axe moteur



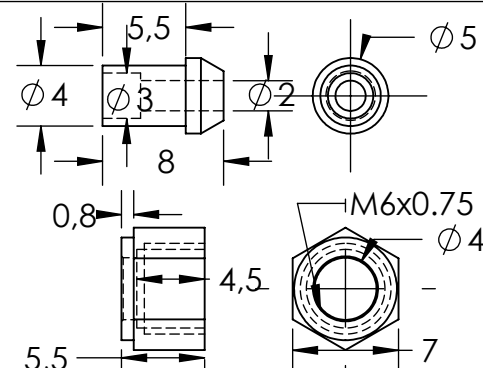
COUPE J-J



bielle

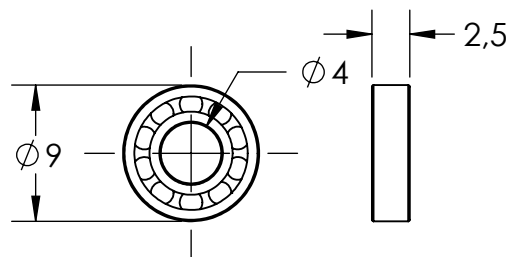


2X clavettes

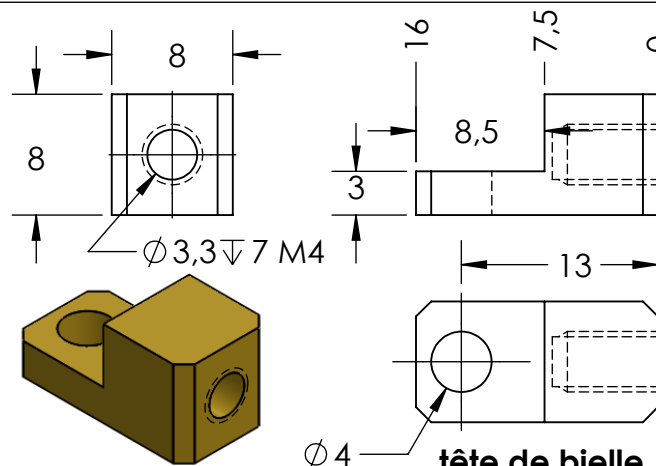


Pompe double effet

Vilebrequin



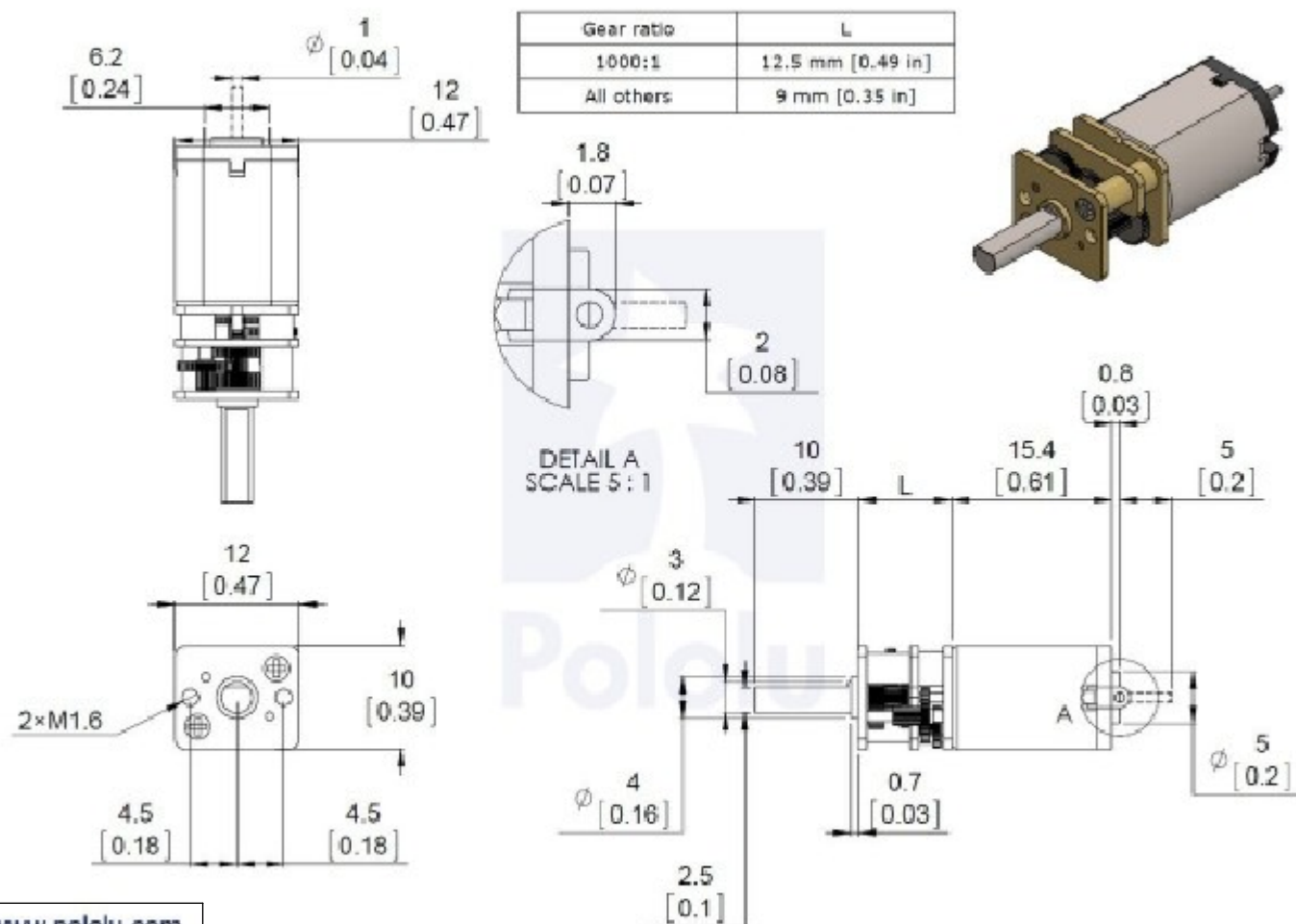
2 X roulements 4x9x2.5



tête de bielle

il existe toute une gamme de réduction selon la tension utilisée
et le rythme de pompage selon la configuration du groupe vapeur

Mon remorqueur Hercule fonctionne depuis 2003 avec un moteur réducté du même type
avec cette pompe double effet

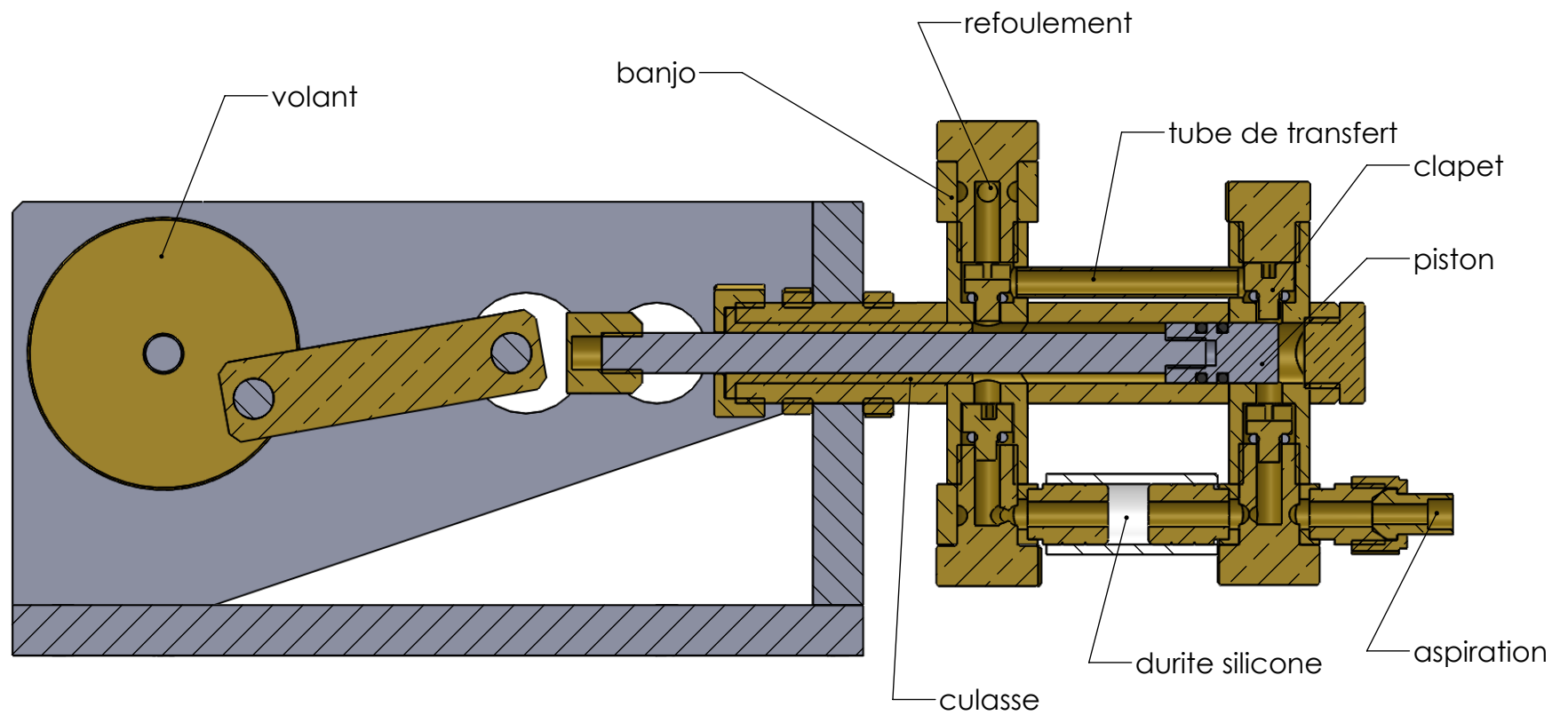


www.pololu.com

exemple d'un moteur réducté

Pompe double effet

Moteur



COUPE K-K

Pompe double effet

Vue en coupe

SIZE A	DWG. NO. 27/03/2017	
SCALE:1:5:1	Francis DUFOUT	Page8