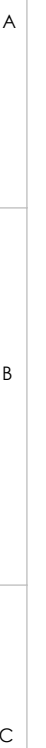


C

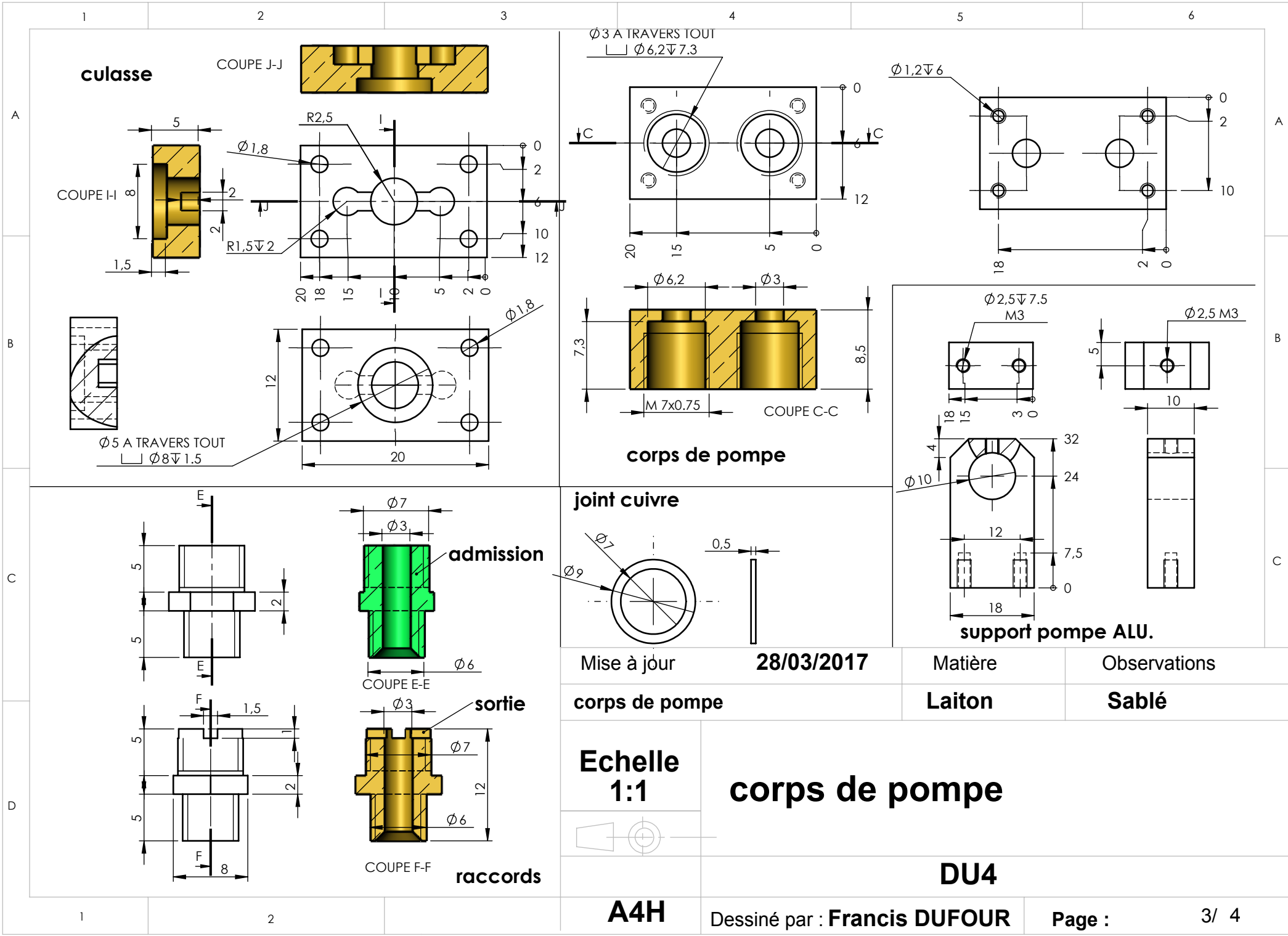
D

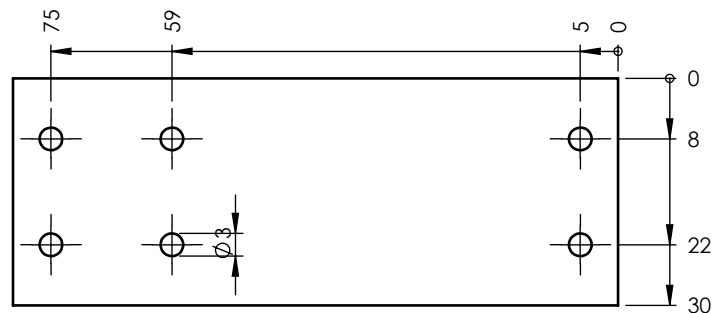


assemblage de la culasse avec le cylindre  
par brasure percer ensuite Ø4.8 et alésoir de Ø5mm

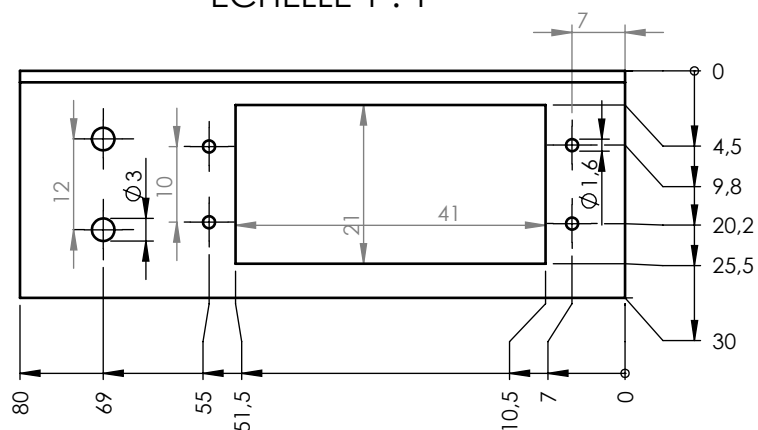
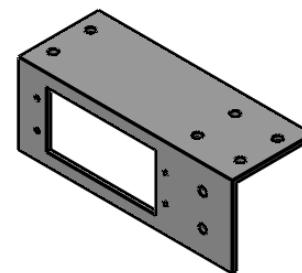
1	2	<b>A4H</b>	Dessiné par : <b>Francis DUFOUR</b>	Page : 1/ 4
---	---	------------	-------------------------------------	-------------



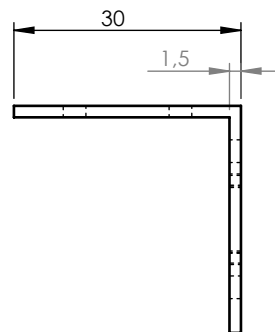




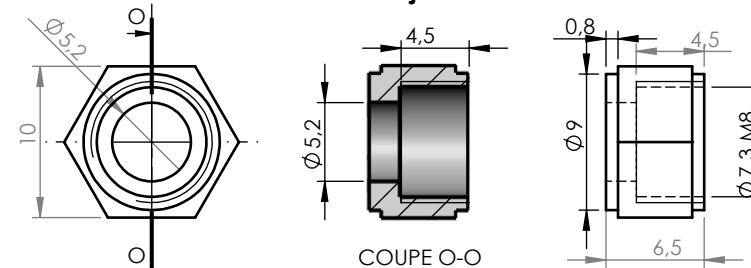
ECHELLE 1 : 1



## La platine cornière 30x30 alu.anodisé

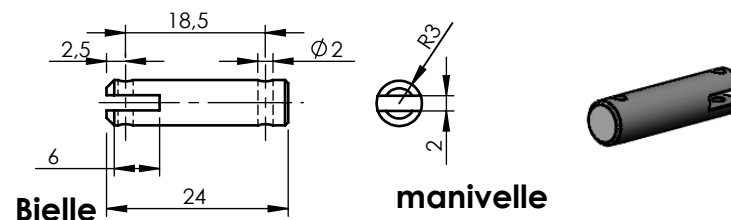


ECHELLE 1 : 2



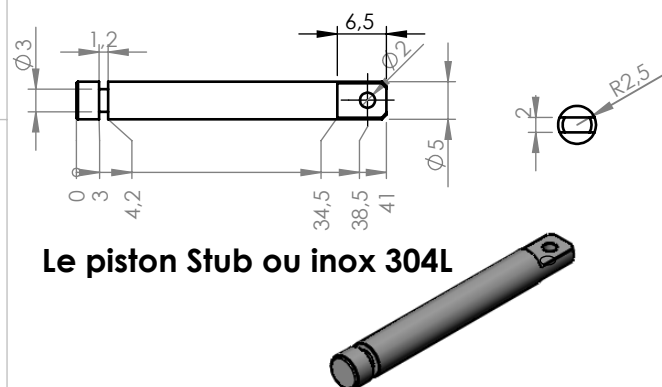
## Echelle 2

### Ecrou press étoupe du piston



## Bielle

manivelle



### Le piston Stub ou inox 304L

Tor Ø3 x 1

<b>support</b>	Matière	Observations
Désignation	<b>laiton</b>	<b>Sablé</b>
<b>Echelle 1:1</b>	<b>POMPE MOTORISEE</b>	
		
<b>28/03/2017</b>		
<b>A4H</b>	Dessiné par : <b>Francis DUFOUR</b>	Page :